

# SPRING 2022 | ALLATOONA LAKE Grapevine

Newsletter for current or former volunteers and employees



US Army Corps of Engineers

## From The Desk of The Manager



Welcome back to the Grapevine!

Allatoona's Volunteer program, led by Chris Purvis, continues to be a shining beacon.

Over the last year we've hosted many visits to include senior leaders from all levels of command- Headquarters, Division and District. Each leader walks

away with comments about how we need to spread this across USACE. I don't think there is a better compliment to our program than senior leaders wanting to emulate what you do across USACE.

It's not only the leadership from Mr. Purvis but it's you, the Volunteers, that make us successful. New volunteers build on the foundation laid by their predecessors but also bring fresh ideas and unique talents. Our challenge

is to capitalize on your unique skills to enhance the stewardship of the Federal lands entrusted to our care.

It has truly been an award winning year. Volunteers were key contributors to Allatoona Lake winning "National Water Safety Team of the Year". Brenda Gano and Nony Brakeman took national honors as USACE "Volunteers of the Year" for their contributions in recycling. Congratulations to Brenda, Nony and each of you that contributed to building an award winning program at Allatoona.

Thank you Volunteers! Past and present. For the time and talent you've invested in making Allatoona a better place.

Enjoy the Grapevine!

Jerry Fulton

## More to Come On The Two National Awards in The Next Edition





## Christmas Tree Fish Attractors

A long established partnership between USACE, GA DNR Fisheries, Keep Bartow Beautiful, and the Marietta Bassmasters received some much needed attention in January this year.



These partners all worked together to rejuvenate the Christmas tree fish attractor sites at Victoria Day Use Area and Cooper Branch #2.



Each year at least one area on the lake is replenished with new trees. This year it was Victoria's turn and USACE Volunteers also threw in a few extra hours to replenish the small area at Cooper Branch.

In all, over 200 trees were placed at Victoria and an additional 40 trees at Cooper Branch. Rangers committed 21 hours and USACE Volunteers another 59 hours to the program moving trees, putting up signs, drilling the trees, on press releases and finally on the workday itself.



Ranger Dan Pingel coordinates the Fish Attractor Program.

### Find "The Ranger"

Much like "Where's Waldo" there are no real rules to the game except that to win you have to find him first. Be sure to be the first to reply all to the email!

"The Ranger" can be hiding anywhere, can you find him? "The Ranger" looks like the image to the right and no, this isn't the ranger you are looking for...





### Returning Volunteers



Rick and Cindy Long  
Canton, GA

Rick and Cindy Long were from Canton, Ga, before becoming full time RV'ers.

Rick recently retired from a 28 year Cobb County Fire Department career. He and Cindy did construction work for over 20 years together.

Cindy also was a volunteer firefighter for years, and is an artist. They are Dawgs!!! They like to stay busy, and are currently cutting grass, wood, and driving heavy machinery for the Corps.

*Welcome  
Volunteers*

### New Volunteers



Carol and Bob Cone  
Canton, GA

Bob and Carol Cone have been married 26 years. They have 5 children and 9 grandchildren.

Both Carol and Bob were born and raised in the Atlanta Metro area (They even dated in High School). Bob has worked in construction, and with Lockheed Martin Marietta Plant where he retired after 27 years.

Bob also served 24 years in the U.S. Air Force where he had the honor of being a Load Master on a C-130 before retiring. Carol worked for Equifax for 37 years where she worked in marketing and security.

Carol and Bob have been camping for over 20 years. They have volunteered at several florida state parks, before coming to work with us at the Allatoona Project Office.

## Bees Bees Bees!

*"The hum of bees is the voice of the garden"*



The project beehive was reestablished at the OPMO early this year.

Park Rangers J.P. Alvarez and Sadie Simpson went through 8 hours of training that was offered by our partner Bobbee McBee's. The goal is to expand the colony into several other areas in the future.





The Allatoona Lake Project is proud to announce the addition of a new hoop house (greenhouse) at the Volunteer Village.



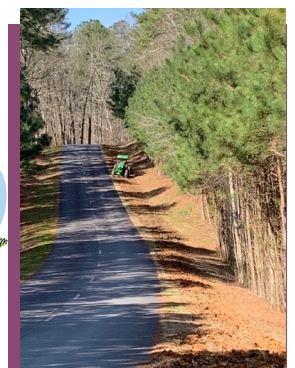
The construction work was mainly completed by volunteers with some assistance by Ranger staff and is already the home to nearly 450 propagated aquatic plants.

Special thanks to Volunteer Curt Gould for his work on the project, and Front Office Manager Elizabeth Whitehead for navigating the not so easy government purchasing system to make sure we had all the materials needed. Oh wait, and to Assistant Project Manager Doug Evans for signing all of the PR&C's!

## Disc Harrowing Stamp Creek

As part of the Allatoona Lake Pollinator and Native Habitat Restoration Program, pollinator plants will be added to several acres of USACE land including in recreation areas where mowing will be cut out of the O&M contract.

Rangers Tyler Tan and Griffen Molenburg and Volunteers disc harrowed parts of the Volunteer Village and along the roadway coming into Stamp Creek Day Use Area in late March and early April.







During the late winter season, rangers and GA DNR biologists took clippings from mature button bush plants from the lakebed near the project office.



The clippings were dipped in a root hormone powder and planted in plug trays until roots and node buds were established. After about four weeks, the clippings were transplanted into larger pots and placed into wading pools filled with water where the plants will continue growing over the next year.



In the fall season of 2023, ranger staff, volunteers, DNR, and other partners will transplant the new button bush plants into the lakebeds to create fish habitats and create shoreline stabilization.



This program is managed by Ranger Linda Purvis.

