



US Army Corps
of Engineers®

The Sign Post

A newsletter for the U.S. Army Corps of Engineers Sign Program

Volume One, First Edition

March 2007

Rick Magee, Editor in Chief
National Sign Program Manager

Jeff Mangum, Senior Correspondent
and New England Bureau Chief

Welcome to The Sign Post.

By Rick Magee, National Sign Program Manager

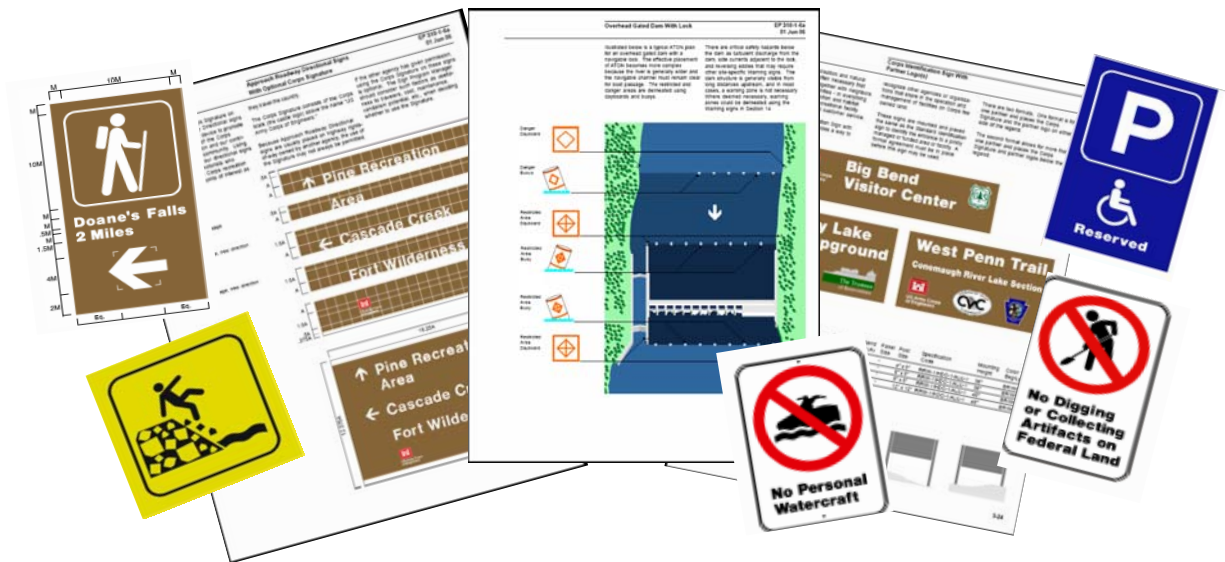
Thank you for taking a few minutes to read **The Sign Post**. This newsletter is brought to you by the National Sign Program Mandatory Center for Expertise (MCX), located in the St. Paul District Office and the National Sign Advisory Work Group (SAWG), composed of representatives from eight Corps divisions, headquarters and the MCX. We hope this newsletter will help you manage your sign program by informing you of changes, giving you some new ideas, and occasionally bring you a smile. Contributions for future newsletters are welcome. But most of all, thank you for taking the time to read **The Sign Post**.

USACE Sign Standards Manual Revised and Digitized

It is here! The long awaited update to Volume 1 of the Sign Standards Manual (EP 310-1-6a) was revised in 2006. It includes updated guidance plus many new signs and symbols. It is now a digital document ready at your computer screen. The manual can be downloaded from the Natural Resource Management (NRM) Gateway at:

<http://corpslakes.usace.army.mil/employees/sign/manual.html>

or from the Corps Electronic Publications Library at <http://www.usace.army.mil/publications/>



Several new signs have been added. Among them are the new partnership identification signs, the ability to place the Corps Communication Mark and Signature on approach directional signs, the addition of blue signs bearing the symbol of universal access, the option to place up to two lines of supplementary text with recreation symbol signs, 8 new symbols, and more. Section 11, Workplace Safety Signs, has been updated to bring it in line with the USACE Safety Manual (EM385-1-1). The chapters on interpretive signs and waterways have been thoroughly revised. There is an all new section for Aids to Navigation (section 15) that incorporates the US Coast Guard guidelines into our standards. Check out all the changes.

Although it has not been revised, a pdf version of Volume 2 is also available on the Gateway.

Thank you to the Sign Advisory Work Group under the leadership of Jeff Mangum for completing this much needed revision.

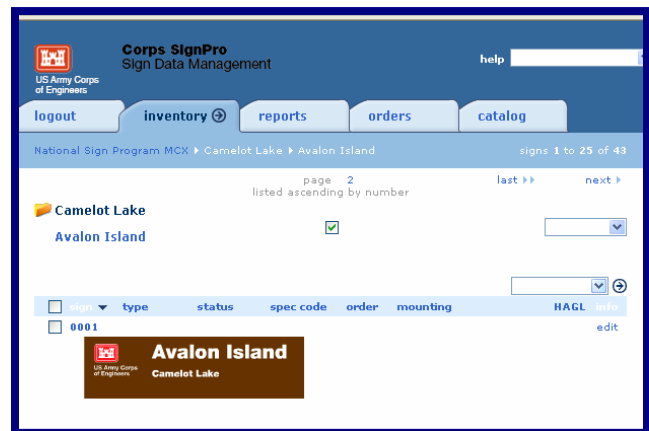
Sign Management Software News

By Jack Nichol, SAWG Member from LRH

Corps SignPro is replacing the DOS-based *Sign Manager* software. *SignPro* is a web-based application for inventorying and ordering signs. It is in line with the newly revised Manual. There is a catalog that includes all the existing signs in the Corps program. *SignPro*, as with the old *Sign Manager*, also provides custom grids that will help you to create signs that will be compliant in terms of format, color, and typeface. However, unlike *Sign Manager*, *Sign Pro* will show you a scaled, color image of the custom sign you create giving you a look at your sign prior to ordering it. This visual feature will significantly aid in developing a balanced layout of sign legends for custom signs.

Although not yet perfected, project sign managers are encouraged to begin using *SignPro* and to send any comments you have concerning the software to your district sign manager to be used for future updates.

Contact your District Sign Program Manager to obtain a login. The web address is <http://signpro.usace.army.mil>.



Important Reminder of Caution, Warning and Danger Sign Requirements

All caution, warning, and danger signs must use approved wording as shown in the Sign Standards Manual. Signs approved since the last revision will be listed on the NRM Gateway. If you perceive the need for other wording, you must submit a Request for Nonstandard Safety Sign through your district and division sign program managers to the Sign MCX. The procedure and request form is found on the Gateway at <http://corpslakes.usace.army.mil/employees/sign/pdfs/waiver.pdf> General guidelines regarding safety signs are found on pages 2.13 – 2.16 of the Sign Manual.

Natural Resources Management Gateway

to the future . . .

Have you passed through the NRM Gateway recently?

By Jeff Mangum, SAWG Chair

Since moving into his lofty cubicle in St. Paul, Minnesota, National Sign Program Manager Rick Magee has been busy as a bee updating the sign program information on the NRM Gateway. In the Sign Program section of the Gateway you can find the revised manual, information on the new software, updated points of contact, tips, ideas, and more. Be sure to check it out! Click on <http://corpslakes.usace.army.mil/employees/sign/sign.html>

Meet the New National Sign Program Manager

By Jeff Mangum, Senior Correspondent

The following are excerpts from an e-mail interview with Rick Magee, the new National Sign Program Manager:

Jeff -- How long have you been with the Corps?

Rick - Allow me to do the math

26 ³/₄ years (total service)

- 2 years (Peace Corps)

24 ³/₄ years with Army Corps of Engineers

Jeff - How many projects have you worked at?

Rick - As a park ranger I worked at 31 dams and the Cape Cod Canal of New England. Of course, my duty station was either Knightville Dam or Tully Lake in the Lower Connecticut River Basin during that entire time. But, I got around. I have also made appearances at other Corps facilities on occasion.

Jeff - How long were you the district sign manager?

Rick - Since the early 1990, I think I found my name on documents for the sign program going back to 1992 or 1993 when I was trying to clean out my office.

Jeff - How much do you love the sign manual?

Rick - It is riveting reading for those dark, stormy, winter nights or when looking for a "beach book" in the summer. It is full of color, direction, and yet on occasion leaves one wondering how do I interpret? Why is it such a weighty manuscript? Open it for guidance, to find the way, to avoid danger, to seek the boundaries of life. I am in awe of those faithful who have passages memorized, who can recite chapter and verse of the priorities for directional arrows or the proper signage for a fee collection station.

Jeff - What would you like me to share about you? What hobbies, interests, experiences?

Rick - I guess I am known for my interest in flags. I have hundreds of them, and dozens of flag books. I suppose there is a connection between the flag as a symbol and signs. I also have been involved in the recent Lewis & Clark Bicentennial, first as part of the team that created the highly successful L&C Discovery Box, then as part of Captain Lewis' Company. I presented programs from Charlottesville, Virginia, to Bar Harbor, Maine, to Long Beach, Washington, and many places in between wearing one uniform or the other. I even got a couple colonels up to dance once, but not with each other. This was the most gratifying, interesting, and demanding experience of my career with the Corps.

Jeff - Favorite food?

Fruit, cheese, ice cream, Indian food, broiled haddock or salmon, ice cream, anything with cranberries, and anything my wife Betsy cooks for me. Did I mention ice cream?



Sign Maintenance Corner

By James West, Tully Lake Sign Shop

A common question is how to match the shade of brown paint or stain specified for Corps signs on pages 4.4 – 4.5 of the Sign Standards Manual. With modern technology, your paint dealer can get an accurate copy of Corps Brown. You can take a painted object (Corps Brown sheeting will not scan accurately) with the correct shade of brown to your local paint shop to optically scan and match with their computers. Or, go to the NRM Gateway for a Good Enough to Share that has the Sherwin Williams formula. There is also guidance to match the color with other paint brands: <http://corpslakes.usace.army.mil/employees/gets.cfm?Id=signprog>

Contact James West at the Tully Lake Sign Shop directly at 978-318-8284, or check out the website at <http://www.nae.usace.army.mil/signshop/>

Kansas City District Sign Shop Reopens

By Robert A Marchi, NWK

The Kansas City District Sign Shop once again became operational in late summer 2006. The district hired Ms. Lisa Freshler from the private sector to run the shop. Lisa brings a wealth of experience from the sign industry, lots of energy, and a new perspective to the job.



Located at Harry S. Truman Dam and Reservoir in Missouri, the NWK Sign Shop first began operation in the early 1980's as a silkscreen operation. Under the guidance of Greg Miller, NWK Sign Program Manager, the shop soon transitioned to computer graphics and vinyl cut lettered signs. NWK has produced signs for Kansas City and several other Corps districts.

While the NWK Sign Shop primarily services the sign making needs of the Kansas City District, the staff welcomes orders from other districts as workload and capabilities allow. Estimates are available on request. The shop produces both standard and custom aluminum and magnetic signs in compliance with the Corps Sign Standards Manual. With a renewed emphasis on efficiency and customer service, cost and turnaround on orders are both expected to be competitive with other available sources.

Contact Sign Shop Manager Lisa Freshler directly at 660-438-7317, ext. 3257 or from the NWK website at <https://w3.nwk.usace.army.mil/subpage.cfm?page=SIGN>

Recent Sign Approvals

In 2006 HQ USACE, approved the sign to the right for inclusion in the Corps Sign Program after review and recommendation by the Sign Advisory Group. This sign was requested by Benbrook Lake in Fort Worth District for an area where model aircraft operation may be close to other recreation activities.



Success with Signs

Have you a success story to share with your colleagues across the Corps? Perhaps you have found an innovative solution for a management problem using signs. Perhaps you devised an interpretive panel that helped reduce problems at a cultural resource site. Maybe you had a situation where a sign was removed and some other management technique was employed. If you have a sign success story to share, submit it as a “Good Enough To Share” item in the Sign Program Section of the NRM Gateway. It may also appear in a future edition of *The Sign Post*.

The Color Yellow

(by Tim Grundhoffer, National Sign Program MCX, Technical POC)

The USACE Sign Standards Manual specifies “Lemon Yellow” Diamond Grade reflective sheeting for some waterway signs. Currently there are three types of yellow Diamond Grade™ sheeting available, none of which are called “Lemon Yellow” by the manufacturer. Colors include “Yellow”, “Fluorescent Yellow,” and “Fluorescent Yellow Green (FYG)”.

Based on large scale comparison, the FYG has the best color representation and reflective performance. Existing signs using “Lemon Yellow” sheeting may stay in-place until the next sign refurbishing cycle.



Actions to be taken:

1. Where “Lemon Yellow Diamond Grade” is specified in the sign manual, “Fluorescent Yellow Green” shall be used.
2. Existing signs using “Lemon Yellow” sheeting may stay in-place until the next sign refurbishing cycle.

“Diamond Grade” is a registered trade mark of 3M Corporation.

Sign Funnies



Have you seen a funny, bizarre, or just unusual sign?
Send your e-photo of it to **The Sign Post**.

Contact Information:

Contact information for UNICOR:
UNICOR Sign Factory
Federal Prison Industries
3901 Klein BLVD
Lompoc, California 93436
Phone: 805-735-6211
FAX: 805-735-4507
E-Mail: jhalb@central.unicor.gov

The Sign Post is produced by the National Sign Program Center for Expertise (MCX).
Rick Magee, National Sign Program Manager
USACE St. Paul District
190 East Fifth Street, Suite 401
St. Paul, Minnesota 55101
Phone: 651-290-5578
E-Mail: Rick.Magee@usace.army.mil