

Section 16: Cooperative Management

Cooperative Management

O&M Contracts Adv



US Army Corps of Engineers
BUILDING STRONG®



Objective

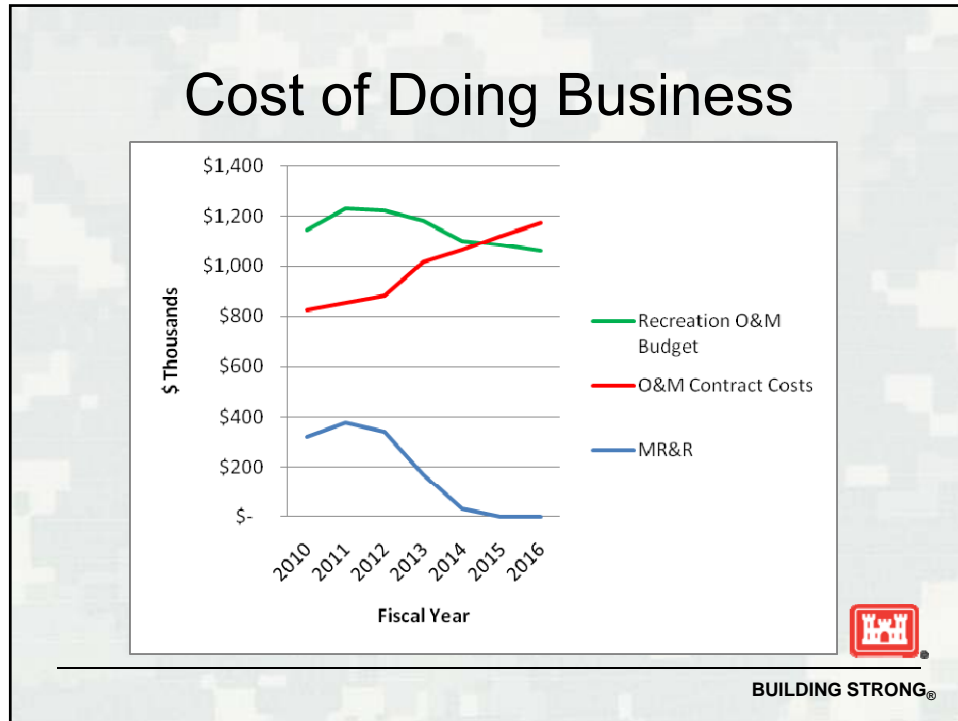
- Upon completion of this block of instruction, the student will be able to correctly identify the options available and advantages/disadvantages in Cooperative Management of Corps Parks with a Cooperating Association.



BUILDING STRONG®



Section 16: Cooperative Management



- ## Available Options
1. Operate at Declining Level of Service
 2. Partial/Full closure
 3. Lease (Traditional)
 4. Cooperative Management of Corps Parks with a Cooperating Association
- BUILDING STRONG®



Section 16: Cooperative Management

Operate at Declining Level of Service

- No added value to recreation user
- Increased complaints
- Decreased level of safety



BUILDING STRONG®

Partial/Full Closure

- Recreational opportunities no longer available to drastically limited
- Guaranteed complaints
 - ▶ Impacts to local economy
 - ▶ Congressional inquiries
- Greater cost to re-open facilities when funding becomes available
- Reality – closed areas do not reopen



BUILDING STRONG®



Section 16: Cooperative Management

Lease (Traditional)

- Recreational opportunities still available to public
- Compliance review of Lessee development and operation
 - ▶ Annual Compliance Review
 - ▶ Constant Development Plan Review
 - ▶ Contract Costs Decrease, but Oversight Costs Increase (NEPA, Regulations, Master Plan Compliance Review)
- Reduced future budget allocation based upon leased status (OMBIL, REC-Best)



BUILDING STRONG®

Cooperative Management of Corps Parks with a Cooperating Association

- 33 U.S.C. § 2328 (Section 225 of the Water Resources Development Act (WRDA) of 1992)
 - ▶ Authorizes the Corps to implement a program to “**share** the cost of operating and managing recreation facilities and natural resources”
- ER/EP 1130-2-500 Partners and Support
 - ▶ Chapter 9 – Cooperating Associations
 - ▶ Chapter 11- Contributions
 - ▶ Chapter 12 – Challenge Partnerships
- <http://corpslakes.usace.army.mil/employees/coopassoc/coopmgmt.cfm>
- The Corps may retain operation and maintenance responsibilities on an area outgranted to a cooperating association, as long as the responsibilities are explicitly defined in the real estate agreement



BUILDING STRONG®



Section 16: Cooperative Management

Advantages

- Use fees retained by Cooperative Association for use on the lease premises
- Marketing by Cooperative Association
 - ▶ USACE Missions, History, etc
 - ▶ Water Safety Blitz



BUILDING STRONG®

Advantages

- Fundraising (Contributions or Donations)
 - ▶ Capital Campaigns
 - ▶ Combined Federal Campaign



Combined Federal Campaign

LOCAL OUR LANDS AND WATERS FOUNDATION
(LEGAL NAME: OUR LANDS AND WATERS FDTN A PUBLIC PARTNERSHIP WITH THE USACE)
Partners with the U.S. Army Corps of Engineers to enhance park facilities, recreational opportunities and our natural resources for this and future generations.

CHARITY TYPE: Local
(972)436-0176 AFR: 19.5%
CHARITY CODE: 49160
EIN: 75-3253640
NTEE CATEGORIES: [Envir. Quality, Protection & Beautification](#) • [Recreation, Sports, Leisure, Athletics](#) • [Educational Institutions & Related Activities](#)

FEDERATION: Unaffiliated

- Facilities not affected by Gov't Shutdown



BUILDING STRONG®



Section 16: Cooperative Management

Advantages

- No longer required to develop, solicit and award service contracts for cooperatively managed areas (Gate Attendants, Facility Cleaning/Mowing, etc.)
- Funds saved from O&M contracts costs are free to use for other purposes
 - ▶ Major rehabilitation and repair
 - ▶ Directed to other facilities
- Cooperative Association can honor same programs as USACE



BUILDING STRONG®

Disadvantages

- Due to the shared responsibilities in the O&M of these cooperatively jointly managed recreation facilities, it is imperative that the Corps and the OLWF maintain close coordination through their POC's to ensure successful park operations.
- REC-Best/OMBIL/FEMS – need to be modified to properly account for contributed services and not penalize managers for making wise decisions. (Statutory authority authorizing the shared cost is an authorized augmentation of the budget and should not displace budget allocations.)

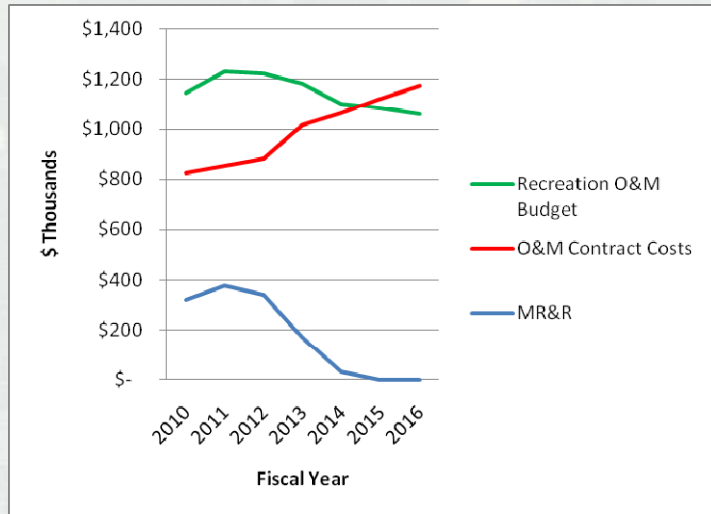


BUILDING STRONG®



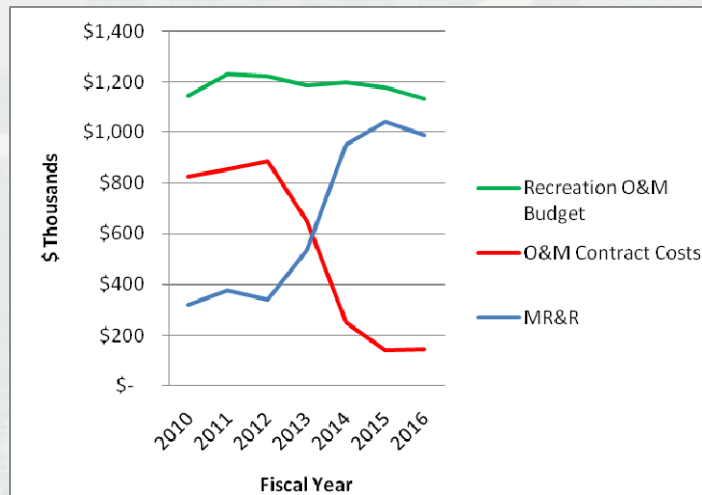
Section 16: Cooperative Management

Cost of Doing Business (Current)



BUILDING STRONG®

Cost of Doing Business (Future)



BUILDING STRONG®



Section 16: Cooperative Management

