

FY15 OMBIL Update

Roads and Parking Data Entry Changes

Initial edition – 24 August 2015
Revised – 8 October 2015
Revised – 14 October 2015



US Army Corps of Engineers
BUILDING STRONG



Agenda

- Why the changes
- Review of updated data entry screens
- Review of Tabs in Unmarked parking tool
- *Break – folks not wanting to see the demo can drop off*
- Demo of resources to get updated measures for unmarked parking and roads
- Questions
- Resources:

<http://corpslakes.usace.army.mil/employees/ombil-rec/guide.cfm>



Show the OMBIL Recreation User Guides Webpage -
<http://corpslakes.usace.army.mil/employees/ombil-rec/guide.cfm>

Newest member to the DOT Federal Lands funding stream

- Federal Lands Transportation Program
 - ▶ Requires Inventory
 - Accurate public road mileage and functional classification
 - GIS Inventory Plan under development
 - Impacts Federal Lands Access Program and Emergency Relief for Federally Owned Roads
 - OMBIL already had basic road inventory, but was difficult to differentiate public, service, rec area and non rec area roads.



3

BUILDING STRONG[®]

- Need accurate inventory information
- GIS inventory is in future years, using OMBIL info to make projections for cost and resource needs
- ERFO uses FLTP inventory. Project would have to provide 20% of cost to repair road if not included in inventory

Rules of the Road

Functional Classification

- **Project Roads**
 - ▶ Outside of designated recreation PSAs
 - ▶ Include mileage where CE responsible for maintenance (Ex. Easement for road on tribal lands)
 - ▶ EX: road across the dam
- **Area Roads**
 - ▶ Inside designated recreation PSAs
 - ▶ EX: access roads, circulation roads, camp loops
- **Impact of Functional Class**
 - ▶ segmentation of roads
 - ▶ infers use level, purpose, speed, access, ect



- For Project roads, would NOT include a state route that crosses the project where CE has not maintenance responsibility. Conversely, there may be a state route that is partially on and partially off due to irregular fee boundary; if CE has easement that requires maintenance, then WOULD include all that mileage. Key is where maintenance responsibility is vested.

Rules of the Road Public Vs Service

- Public Roads – a road that except during scheduled periods, extreme weather conditions or emergencies, the road is open to general public for use with a standard passenger vehicle without restrictive gates or prohibitive signs or regulations, other than for general traffic control or restrictions based on size, weight or class of registration (23 USC 125)
- In CE managed areas, assumes that the maintenance responsibility is vested in the Corps. In non-CE managed areas, assume maintenance responsibility is vested in leaseholder.



- Public road defined in US code.
- Note assumption. Issues will get resolved in GIS inventory.

Rules of the Road Public Vs Service

- Service Roads
 - ▶ Public use not allowed with passenger vehicles
 - May allow public access for other transportation modes (ex: pedestrian or bicycle)
 - ▶ Typically have gates and signage identifying the restricted access



- For service roads the key is that public passenger vehicles are NOT allowed. GIS inventory will capture public access via other modes of transportation, like walk or bike.

Rules of the Road Road Segments

- Minimum length of .02 miles (aprox 106 feet)
- Do not include boat ramps, travel lanes in parking lots, dump station pullout, or camping pads.
- Longest continuous path
- Centerline miles regardless of lanes
- Natural breaks for segments may be forks, or T intersections.



- There are additional functional classes set-aside for other types of paved surfaces like boat ramps, pull outs and camping pads. These types of paved surfaces should not be considered public or service roads.

Rules of the Road Condition

- 7-pt condition scale similar to Rec Best
- Miles of roads in that condition *(RecBest uses %)*
 - ▶ Public and Service Roads rated separately.
 - ▶ For project roads, consider total mileage at condition regardless where the are.
 - ▶ For area roads, consider roads only within that PSA.



There are a number of changes taking place associated with condition as part of Asset Management, Operational Condition Assessment, RecBEST and OMBIL. New condition assessment guides have been developed that crosswalk the different scales and use the criteria associated with PASER road condition assessment method. Those are posted to the OMBIL User Guides. Currently guide posted for Asphalt roads; gravel roads guide in development.

Rules of the Road Parking Lots

- To be a single lot, there must be a direct connection between sections
- Count as separate lots if there is a median or divider that disconnect sections of parking (in particular for roadside parking).
- If lot is unmarked, use tool provided for calculation of spaces
- **Camping vs Day use spaces**
 - ▶ Camping spaces intended for areas restricted to campers and guests. Does not include parking pad at campsites.



- Focus on identifying distinct separate areas of parking. One way might be to have them think of how they would measure areas of parking to determine how much asphalt or gravel is needed to resurface.
- Camping Spaces are for additional parking that is provided in campgrounds that are restricted to campers and their guests. Examples of these spaces might be at the restroom building, trailer parking at boat ramp, parking near beach or other camper only facility. DO NOT include parking that is part of individual campsites. If day users are allowed to use the facilities in the campground, then those spaces should be under day use.
- Camping spaces will be grayed out and not allow data entry for certain PSA subtypes

Project Roads - Public

ANNUAL PROJECT DATA UPDATE

Project Site: CENTER HILL LAKE | Fiscal Year: 2015 | Get Report

** Only enter data here that is not included in the Recreable Area but is considered to be part of the Project.*
** Number of miles should be entered into the condition categories. Do not leave blank for both Centerline Miles Paved and Centerline Miles Unpaved.*

Public Roads (do not account for in PSA's)	FY2014	FY2015	FY2015 Percent
Count of Public Roads			
Centerline Miles Paved Total			
Centerline Miles Unpaved Total			
Excellent (mi)			0
Good to Excellent (mi)			0
Good (mi)			0
Fair to Good (mi)			0
Fair (mi)			0
Poor to Fair (mi)			0
Poor (mi)			0
PSA Public Road Count			
PSA Centerline Miles Paved Public			
PSA Centerline Miles Unpaved Public			

Version 18

BUILDING STRONG®

•Note if screen is for Public or service roads.

•Use "Rules of the road" to determine the count of roads.

•Enter Centerline miles regardless of lane numbers.

•Enter miles at each condition rating

Note Project Roads has two screens, one for Public roads and one for Service roads

Project Roads - Service

ANNUAL PROJECT DATA UPDATE

Project Site: CENTER HILL LAKE Fiscal Year: 2015 Get Report

* Only center line miles that is not included in the Progression Worksheet is considered to be part of the Project Site.
* Number of miles should be entered into the condition categories under "Centerline Miles Unpaved Service Roads".
* Number of miles should be entered into the condition categories under "Centerline Miles Paved Service Roads".

Service Roads (accounted for in PSAs)	FY2014	FY2015	FY2015 Percent
Centerline Miles Paved			
Centerline Miles Unpaved Total			
Excellent (mi)			0
Good to Excellent (mi)			0
Good (mi)			0
Fair to Good (mi)			0
Fair (mi)			0
Poor to Fair (mi)			0
Poor (mi)			0
PSA Service Road Count			
PSA Centerline Miles Paved Service			
PSA Centerline Miles Unpaved Service			

Previous Next Done Save

Version 15

•Service Road Screen is exactly the same... so watch for Service Road on the first row.



BUILDING STRONG®

PSA Facilities – Roads and Parking

FACILITIES ANNUAL UPDATE

Fiscal Year: 2015

Project Site Area: CENTER HILL RECREATION AREA

Facility Category: Roads

Primary Area Sub-type: DAY USE AREA

*The number of miles should be entered into the condition categories under Public and Service Roads for both Centerline Miles Road and Centerline Mile (paved)

Facility Type	Count	FY 2014	FY 2015
Count of Public Roads	?		
Centerline Miles Paved Public	?		
Centerline Miles Unpaved Public	?		
Excellent (mi)	?		0
Good to Excellent (mi)	?		0
Good (mi)	?		
Fair to Good (mi)	?		0
Poor to Fair (mi)	?		0
Poor (mi)	?		0
Count of Service Roads	?		
Centerline Miles Paved Service	?		
Centerline Miles Unpaved Service	?		
Excellent (mi)	?		
Good to Excellent (mi)	?		

12

BUILDING STRONG®

•Pull down for Roads facility category

•Note if section is for Public or service roads.

•Use “Rules of the road” to determine the count of roads.

•Enter Centerline miles regardless of lane numbers.

•Enter miles at each condition rating

PSA roads has one long screen that includes both Public and Service.

PSA Facilities – Roads and Parking

Facility Type Name	FY 2014		FY 2015		Percent
	Corps	Outgranted	Corps	Outgranted	
Count of Public Roads	?				
Determine Miles Paved Public	?				
Determine Miles Unpaved Public	?				
Excellent (mi)	?			0	
Good to Excellent (mi)	?			0	
Good (mi)	?			0	
Fair to Good (mi)	?			0	
Fair (mi)	?			0	
Poor to Fair (mi)	?			0	
Poor (mi)	?			0	
Count of Service Roads	?				
Determine Miles Paved Service	?				
Determine Miles Unpaved Service	?				
Excellent (mi)	?			0	
Good to Excellent (mi)	?			0	
Good (mi)	?			0	
Fair to Good (mi)	?			0	
Fair (mi)	?			0	
Poor to Fair (mi)	?			0	
Poor (mi)	?			0	
Count of Parking Lots	?				
Camping Car Spaces	?				
Camping Trailer Spaces	?				
Day-use Car Spaces	?				
Day-use Trailer Spaces	?				

•Service Road section same inputs as Public Road section

•Use "Rules of the road" to determine the count of Parking lots.

•Enter number of car or trailer spaces for day use and camping areas separately.



BUILDING STRONG®

Version 23
13

Demonstrations

- Using parking tool for unmarked parking lots
- Using Google Earth for road segments and measurement



Unmarked Parking

- Space calculation tool developed to provide a uniform approach to assist Projects' estimations of parking capacity at unmarked lots
- Per PSA requirements, parking areas should have an improved surface
- Can be used by OCA teams for QA/QC



Unmarked Parking

- Based on dimensional envelope measurements encompassing unmarked parking areas
- Measurements can be derived from Google Earth, taken in the field, or from other sources of known measurements
- Select the primary vehicle type, car or trailer parking. The tool does not accommodate mixed vehicle types
- Provide users the capability to enter the predominant angle of parking spaces

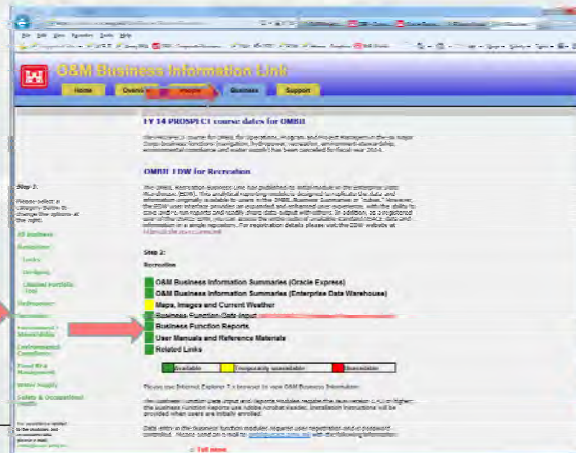


PULLING FY14 ROADS DATA FROM OMBIL



Getting FY14 Roads Data for Reference

- OMBIL Reports
 - ▶ OMBIL Website - <https://ombil.usace.army.mil>
 - ▶ Business Tab, Recreation from Green List on left side of screen, Business Function Reports from Center of Screen

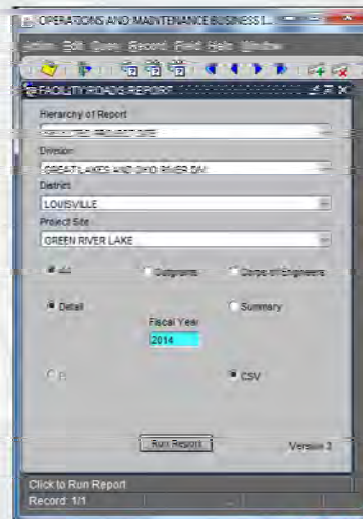


Getting FY14 Roads Data for Reference

- PSA Roads
 - ▶ In OMBIL Reporting Window, select Recreation from the Business Function and the “REC-Facility Roads Report”
 - ▶ Change Hierarchy as desired
 - select detail button
 - enter Fiscal Year “2014”

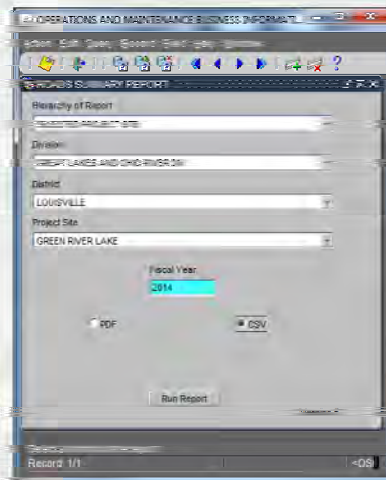
- **Issues!!!!!!**

- ▶ Condition data was for paved vs unpaved, not public vs service.



Getting FY14 Roads Data for Reference

- Project Roads
 - ▶ In OMBIL Reporting Window, select Recreation from the Business Function and the “Roads Summary Report”
 - ▶ Change Hierarchy as desired
 - enter Fiscal Year “2014”
 - Select either PDF or CSV
- **Issues!!!!!!!**
 - ▶ Mileage and counts were for all roads at project, not just the roads outside of recreation PSAs. Summary report does not distinguish between public and service.



Discussion & Questions

Resources:

<http://corpslakes.usace.army.mil/employees/ombil-rec/guide.cfm>

