

# MASTER PLANNING

## MODULE 4: WHAT TRIGGERS A REVISION OR SUPPLEMENT

*"The views, opinions and findings contained in this report are those of the authors(s) and should not be construed as an official Department of the Army position, policy or decision, unless so designated by other official documentation."*



**US Army Corps  
of Engineers®**



# Key Concepts:

- Supplement or Revision?
- Decision Flow Chart
- Non-Triggers
- Triggers for Supplements
- Triggers for Revisions



US Army Corps  
of Engineers ®



# WHEN TO PREPARE A SUPPLEMENT OR REVISE A MP

## New O&M Projects

To be prepared as soon as possible after Congressional approval of the Project

## Existing O&M Projects

**Evaluation:** by interdisciplinary team for relevance every 5 years

**Supplement:** if MP needs minor changes and modifications

**Revision:** if a MP does not serve its intended purpose and is in need of a cover-to-cover update (see definition in EP 1130-2-550, ch 3)



US Army Corps  
of Engineers ®



# 5-YEAR EVALUATION OF MASTER PLANS

Operations-led interdisciplinary team

Review will be brief and general in extent and focus on performance measure criteria (especially Resource Objectives and Land Classifications including identification of ESAs)

At conclusion, District Commander will sign a statement indicating the status of the MP

- If plan is compliant, no other action is required
- If not compliant, the completed review serves as the administrative record indicating the MP is still relevant, even if revision or supplementation is needed

Important to keep record on file or attached to MP



US Army Corps  
of Engineers ®



# WHAT DOES NOT TRIGGER A MASTER PLAN SUPPLEMENT OR REVISION?

- District Commander reviewing a MP and signing off that the MP (while possibly not up to date) is still functioning and serving project purposes
- Changes to Environmental Operating Principles, Civil Works Strategic Plan, and National Performance Measures
- Age of the MP is not the primary factor (because it is old, doesn't mean a complete revision is needed – it may need supplementation – it may still be relevant without further action)
- Aging facilities –replacing or repairing existing facilities, or minor expansion of footprint of facilities or infrastructure
- Current MP is defensible (status quo on triggers list)



US Army Corps  
of Engineers ®



# WHAT TRIGGERS A SUPPLEMENT? - 1

Minor change in a land use classification

- Includes shrinking or expanding an existing park or other management area
- Closing an area to the point where the land use classification is changing

Designating permanent utility corridors

Change in Resource Objectives

- For example: a change that would trigger preparation of a NEPA document



US Army Corps  
of Engineers ®



# WHAT TRIGGERS A SUPPLEMENT? - 2

## Documenting a collection of past minor O&M actions during a 5-year review

- At the time of the 5-year evaluation or during preparation of any supplement is a good time to document a collection of minor O&M actions during the supplement process. For example:
  - Minor facility expansions such as trail extensions, building modifications (minor), adding a volunteer park pad, etc.



US Army Corps  
of Engineers ®



# INTRODUCTION TO WHAT TRIGGERS A REVISION

A MP Revision is rarely triggered by a single factor – more commonly it is triggered by multiple factors

In general, outdated resource objectives and land classifications are the most problematic factors

The following slides describe various triggers and are intended to serve as examples of factors to consider when deciding to do a MP Revision



US Army Corps  
of Engineers ®





# WHAT TRIGGERS A REVISION? - 1

**Is the Master Plan compliant with ER/EP 1130-2-550, Ch 3 (change 5 & 7, 30 Jan 2013)? If the answer to any of the following questions is No, a revision may be needed:**

Does the Master Plan address regional and ecosystem considerations?

Does the Master Plan address project resource capabilities and suitabilities?

Has the Master Plan considered expressed public interests?

Does the Master Plan include a land classification system that recognizes environmentally sensitive areas or the lack thereof?

Does the Master Plan include specific natural resource management objectives?

Has the Master Plan been excessively supplemented, resulting in a significant cumulative effect?



US Army Corps  
of Engineers ®



# WHAT TRIGGERS A REVISION? - 2

## Have any of the project's purposes (authorizations) changed?

Legal mandates

- Mitigation requirements
- Tribal requirements
- Sustainability

Changes to water management regime

- Water demands
- Significant changes to pool levels that significantly impact recreation and management of the lake



US Army Corps  
of Engineers ®



# WHAT TRIGGERS A REVISION? - 3

**Have there been any major changes in natural resources?**

Special Status Species (especially Federally listed Threatened and Endangered Species)

Dramatic erosion

Significant threats to land management/ project resources/ missions

Competing interests for the same resources (resulting in major land reclassification or major resource objective changes)

Pressure for mineral exploration and production

Invasive species

Statewide wildlife plans

Project lands (wildlife corridors?) segmented/ fragmented



US Army Corps  
of Engineers ®



# WHAT TRIGGERS A REVISION? - 4

## Have there been considerable changes in demographics?

### Development pressure

- SCORP (statewide regional emphasis) trends analysis for outdoor recreation
- Need or demand for activity present?

### Increased land use requests (utility easements, roads, municipal infrastructure...)

### Annexation by cities

### Increased level of encroachments

### Overuse of existing facilities –

exceeding carrying capacity  
(boating, campgrounds, trails,  
utility line crossings ...)

- Has a carrying capacity study been done and when?

### Changes in access

### Changes in the type of recreation demanded

### Culture changes

- Generational, ages, ethnic

### Divestiture or excess of public lands (how do we defend it?)

Intense pressure to revise a SMP  
can drive changes in the MP to  
occur to accommodate changes  
to SMP.



US Army Corps  
of Engineers ®



# WHAT TRIGGERS A REVISION? - 5

## **Philosophical changes in agency management**

Additional lands acquired / project lands disposed to others

Type and degree of land use promoted by the Corps

Fiscal changes

Political pressure



## **Opportunity presents itself to revise**

ex: BassPro or Toyota wants to contribute funds to do something big

ex: Lanier with Atlanta Olympics

## **Significant gaps in data where more info is needed - anything needed that isn't in the current MP**

### **Questions to Consider:**

Are there gaps that make the project susceptible to pressure?

Does it meet the needs of our partners?

Does it provide the flexibility to allow or deny proposals by others?



US Army Corps  
of Engineers ®



# WHAT ACTIONS NEED TO BE SUPPORTED BY THE MP PRIOR TO THE ACTION BEING IMPLEMENTED?

Changes to resource objectives or land classifications

New recreation areas, major recreation leases, major new facilities, access areas

Changes to existing recreation areas - new facilities, design, layout, use patterns/potential, consolidation of facilities and areas

New environmental projects - O&M, partner developed, Continuing Authorities Program authorized, etc.

## What Actions Do Not Need to be Supported by the MP Prior to the Action Being Implemented?

Repairs, replacement, restoration, or general maintenance of facilities and resources to achieve current standards

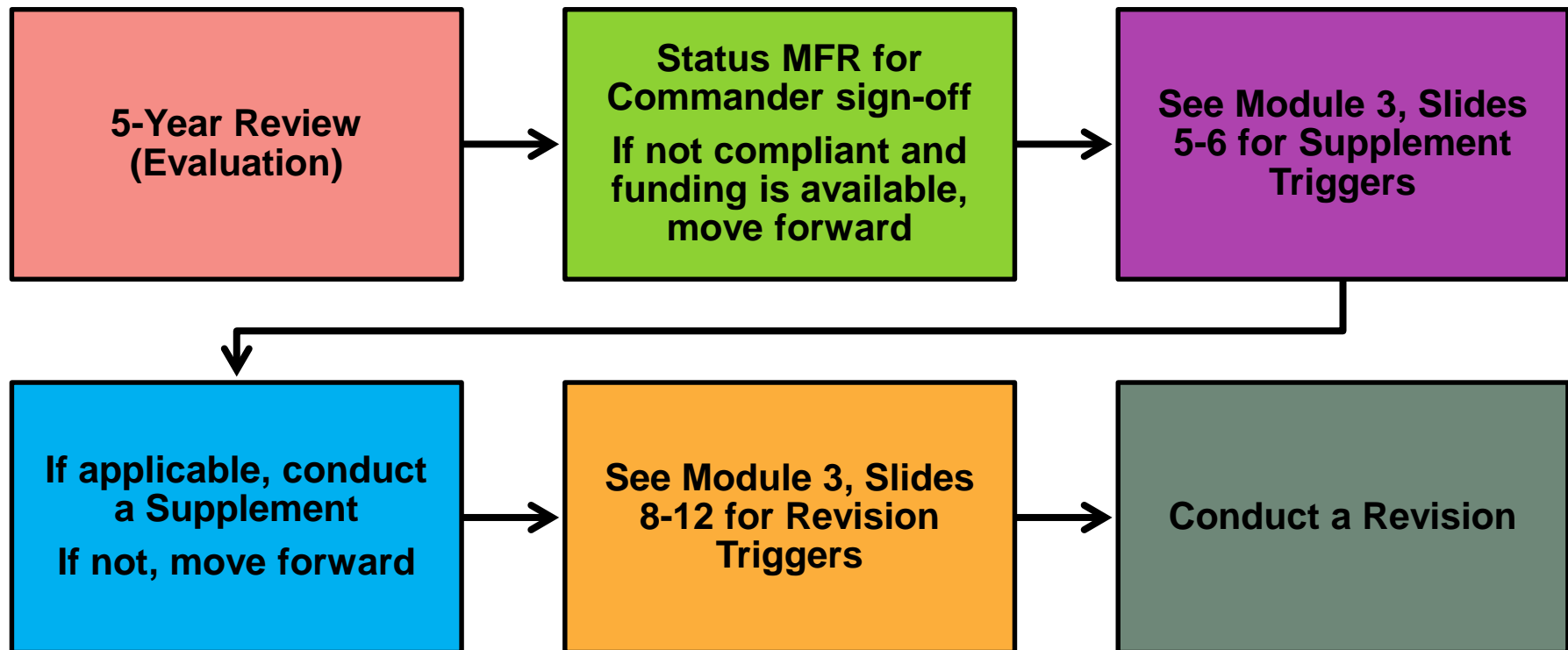
Actions that are compatible with existing MP and other project purposes do not need further approval



US Army Corps  
of Engineers ®



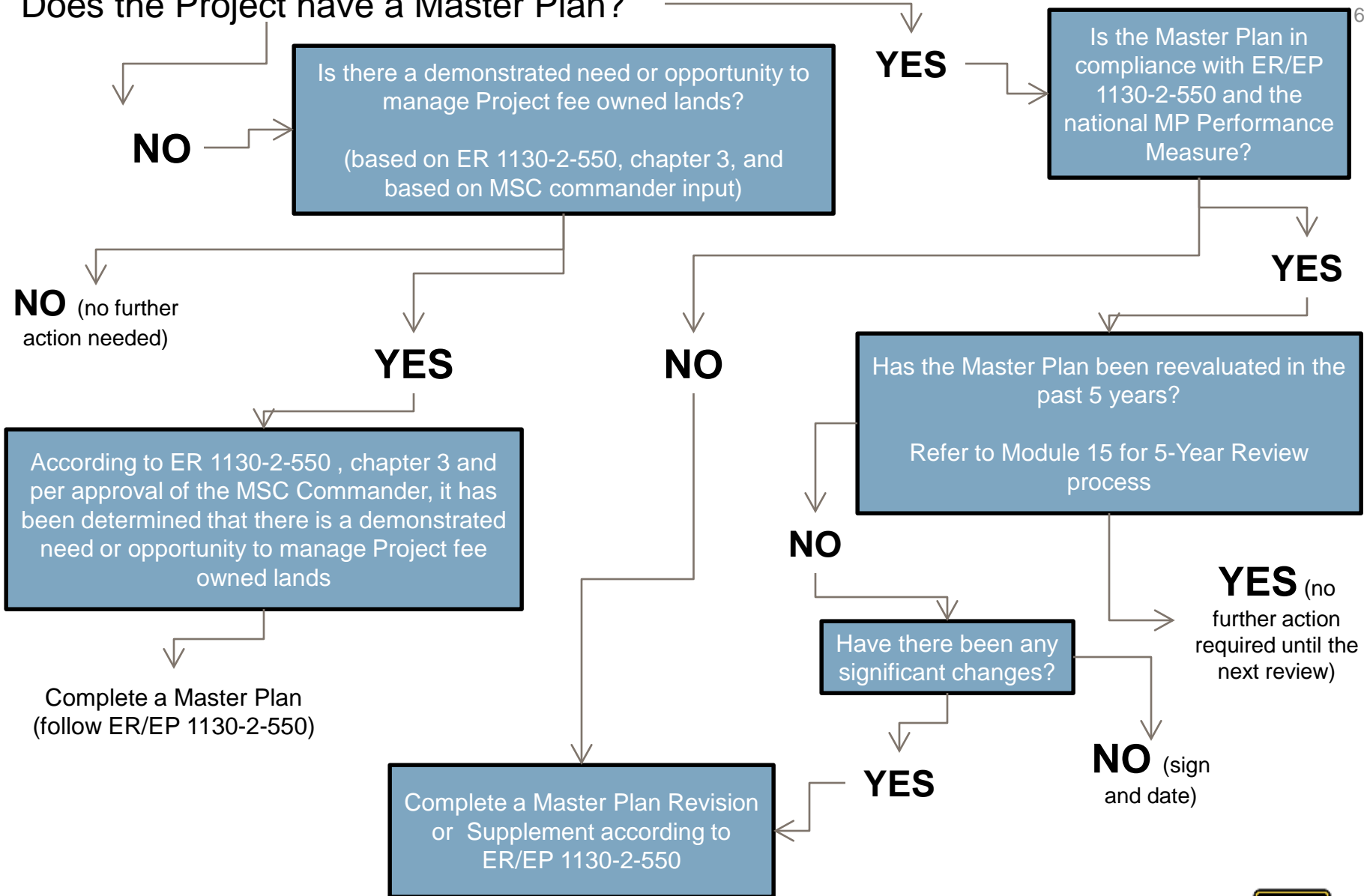
# DECISION TREE FOR DETERMINING IF A SUPPLEMENT OR REVISION IS NEEDED



US Army Corps  
of Engineers ®



# Does the Project have a Master Plan?



US Army Corps  
of Engineers ®

