



AMERICAN CONSERVATION EXPERIENCE (ACE)





Celebrating 20 Years

Founded in 2004, ACE is a nonprofit organization dedicated to providing rewarding environmental service opportunities for young adults and emerging professionals of all backgrounds to explore and improve public lands while gaining practical professional experience.

We have partnered with over **250** federal, state, and local land management agencies to make the greatest impact possible in our communities and beyond.

We have completed projects in all 50 states and several territories.





2024 IMPACT

1,578

MEMBERS

Gained personal and professional skills, make and impact and launch their career in conservation.

1,000,000

MEMBER HOURS

Number of hours our members devoted to conservation service.

228

MILES OF TRAILS

The number of trail miles that our crews built, improved and assessed to ensure access to outdoor recreation

3,446

ACRES - INVASIVE SPECIES

The number of acres treated for removing and mitigating invasive species that severely damage ecosystems.



200+

PROJECT SITES

Number of locations for completing conservation projects ranging from national parks to local wildlife refuges.

1,129

**NON-HISTORICAL
STRUCTURES**

Non-Historic Structures
Constructed or Maintained
(ie Visitor Centers,
Campsites, etc.)

72,760

TREES/SHRUBS

The number of trees and shrubs planted to restore habitats, prevent erosion, and bring additional conservation benefits.



ACE Crew Scope of Work:

- **Trail Construction**, design, and maintenance
- **Retaining walls**, staircases, and masonry
- **Habitat restoration** involving native planting and non-native invasive species removal
- **Reforestation**
- **Campground** improvements and sign installation
- **Forestry** and fuels reduction
- **Fence repairs**, fence building, and boundary marking
- **Disaster Response** and mitigation
- **Storm cleanup** and debris removal

ACE Crews Provide

- Experienced Staff Leadership (Crew Leaders)
- Wilderness First Aid/ First Responders with Chainsaw Training
- Food and living allowances for members
- All Tools, Supplies, and kitchen/ camp gear
- Vehicles
- Arcgis Collection and mapping
- State Specific Licensed Herbicide Applicators





ACE Crew Specializations

- Mechanized Trails Program
- Machine Operators
- Trail layout and design
- Specialized trainings for rigging, carpentry, and masonry
- Vegetation Management Plans
- Plant surveys and Mapping
- A and B level tree felling
- In house training program for Wilderness Medicine, chainsaw operation, and trail structures

ACE EPIC (Emerging Professionals in Conservation):

- The EPIC Program provides early career professionals with focused, hands-on opportunities to work alongside and under the guidance of agency mentors and to apply their knowledge of resource management on actual projects and programs as they develop and emerge as the next generation of resource and land managers.
- EPIC places nearly 1000 members a year with federal, municipal, non-profit, and other land management agencies across the country
- EPIC develops bespoke agreements and budgets, and develops a recruitment strategy that is tailored to the individual position



ACE EPIC



- Recruits and screens qualified applicants to ensure alignment of candidate skills and goals with desired project outcomes
- Provides a single point of contact for the members to support them through their term
- Manages member payroll and expense reimbursement and provides workers compensation and vehicle insurance
- Has adaptive and flexible programs to meet partner and member needs for a successful project and professional development experience

ACE EPIC

Project Areas:

- Aquatic Monitoring
- Biological Monitoring & Sampling
- Botany & Native Plant Propagation
- Cultural Resource Management
- Fuels Reduction & Fire Recovery
- Fisheries Sampling & Management
- GIS & Data Management
- Interpretation & Education
- Invasive Species Control
- Maintenance & Facilities Management
- Paleontology
- Recreation
- Timber Cruising
- Trail Building & Surveys
- Visitor Services
- Wetland Restoration
- Wildlife Management
- and more...



Crew Project Highlight

Great Smoky Mountains Natl Park

Bullhead Trail Rehabilitation

- Front country and backcountry trail repair
- Focus on erosion control and user safety
- Drainage, staircases, and retaining walls
- Technical carpentry work
- Masonry work and rock drilling
- Extensive repairs and improvements on 4 miles of trail





Crew Project Highlight

Conservancy for Cuyahoga Valley Natl Park

Over 10 weeks the crew focused on removing non-native invasive plants as well as completing a tree planting project involving planting native tree species to restore 42 acres of land recently added to the national park.

EPIC Project Highlight

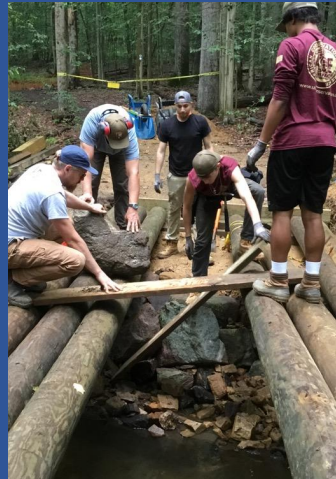
AREMP Program

Oregon, Washington, & Northern California

The Aquatic and Riparian Effectiveness Monitoring Program (AREMP) is an interagency collaboration between the U.S. Forest Service (USFS) and the Bureau of Land Management (BLM).

4-8 Members per year since 2018 working with USFS and BLM staff to conduct:

- Habitat Assessments: Measuring stream channels and identifying key features like pools and large woody debris, which are crucial for aquatic life.
- Biodiversity Monitoring: Collecting samples of benthic macroinvertebrates—tiny organisms that act as key indicators of a stream's health.
- Ecological Health Checks: Testing water quality and actively searching for invasive species to prevent environmental damage.



EPIC Project Highlight

Fisheries Program Grand Canyon National Park

Through the National Park's Native Fish Ecology and Conservation Program, ACE Members direct support the mission to protect and restore native fish populations in one of the world's most iconic ecosystems.

10-14 Members per year since 2019 have worked alongside park staff for the purpose of:

- **Fish Management:** Assisting with the release of endangered fish, monitoring both native and nonnative populations, and removing invasive species.
- **Hands-On Surveys:** Conducting a variety of surveys using specialized techniques like boat electrofishing, hoop netting, and PIT-tag technologies to gather vital data.
- **Data Collection:** Meticulously recording field data using modern tools like tablets and software to ensure accuracy and support ongoing research.



Thank you!



Contact

Jenn Layman

Chief Partnership & Strategy Officer

jlayman@usaconservation.org

412-725-7918

Adam Scherm

National Director, Crew Programming

ascherm@usaconservation.org

928-814-2647

Joel Baker

National Director, EPIC Programming

jbaker@usaconservation.org

385-266-7867