

**U.S. Army Corps of Engineers
Fiscal Year 2025
Handshake Program Application**

Please review instructions before completing application!

Corps Lake/River Project Name: **Arcadia Lake**
District / Division: **SWT**
Handshake Proposal Title: **Oklahoma Mountain Bike Association**
Corps POC Name: **Ashley Ayers**
Telephone: **(918) 508 - 0628** ext.
E-Mail: **ashley.n.novar@usace.army.mil**

A. Checklist:

1. Will the Handshake funds be spent on Corps facilities and resources that are being fully maintained by the Corps? (not in outgranted parks) Yes No
 2. Will the Challenge Partnership agreement be with a non-federal public or private entity(ies)? Yes No
 3. Is the proposed activity within current authorities and contained in the annual or 5-year work plan in the approved lake project OMP? Yes No
 4. Have all of the NEPA requirements been considered for this project? Yes No
 5. I am aware the Challenge Partnership Agreement must be reviewed and approved by District Office of Counsel before sending to HQUSACE. Yes No
 6. If the full funding amount requested is not available, could a portion of this Handshake Project be completed with partial funding? Yes No
 7. I am aware that all government funds must be spent in accordance with FAR, DFAR and AFAR contracting laws and regulations, and that Handshake funds cannot be provided to the partner(s). Yes No
 8. Did you participate in a Handshake webinar in 2024 or review a 2024 Handshake webinar on the Gateway? Yes No
-

B. Handshake Funding Request (maximum \$25,000): 14,000.00

C. Corps Foundation Bonus Request: (maximum \$5,000):

Separate bonus funding provided by the Corps Foundation for a selected Handshake Project. Please do not include bonus funds on your overall financial spreadsheet below. Provide an explanation of how the funds will be used in the Corps Foundation Bonus section.

D. Incentive Points Category: Check the appropriate box if your application qualifies to receive bonus points on the evaluation score.

This lake/river project has never received Handshake funding. (100pts)

This lake/river project's Handshake application includes a NEW partner that the lake/river project has never worked with before. (50 pts) Please list the NEW Partner:Oklahoma Mountain Bike Association (OMBA)

This lake/river project's Handshake application includes a Tribal partner. (200 pts) Please list who this Partner is:

E. Describe your partnership and the proposed Handshake Partnership Project:

Project applications will be evaluated on the categories below. Please complete each section as appropriate.

Summary Statement:

Together with our partners, we are requesting funding to construct 3 specific park amenities to improve the Post Road Trailhead located at the east entrance on Arcadia Lake. The trailhead provides parking and access to over ten miles of natural surface trails in a wooded environment. Specifically, Oklahoma Mountain Bike Association (OMBA) will construct: a 12' by 20' lean-to style park pavilion, a changing station for users to change clothes, and a bike repair station. The USACE has a long-standing partnership with OMBA and the City of Edmond Parks and Recreation Department. It is through this partnership that the trails are constructed, managed, and maintained. Population in the Edmond area is growing at a rate of more than 1% per year. As communities expand, the need for greenspace and quality recreation grows proportionately. The public land is beneficially used by providing approximately 10 miles of natural surface trails in a shaded, wooded setting and over two miles of open surface road (paved or gravel), all within USACE property. This secluded setting attracts large numbers of hikers, dog-walkers, runners, mountain bikers and other recreational enthusiasts. As more people frequent the area, the demand for basic park amenities has increased. Unfortunately, there are no services at the trailhead other than a gravel parking lot, a porta potty type restroom and two donated picnic tables.

Handshake Funding Cost Break Down:

12' by 20' Lean-to style pavilion; materials: pressure treated posts and timbers, steel roofing, concrete foundation, miscellaneous screws, brackets, and hardware - \$7500. Project will be completed within 5 weeks once funds are made available.

Dual L-shaped changing stations; materials: decking board, pressure treated timbers, paver edging, concrete foundation, miscellaneous screws and hardware - \$4000. Project will be completed within 2 weeks, once funds are made available, and previous project is completed.

Bicycle repair station; permanent structure with tools and air pump - \$2500. Project will be completed within 1 week once project funds are made available and previously mentioned projects are completed

Total project cost: \$14,000 (project has been estimated using retail costs at local hardware stores. Labor will be supplemented by OMBA volunteers).

Total project duration: 8 weeks / dependent upon weather

O&M Impacts:

There will be no overall increase in O&M Cost to USACE. The ongoing maintenance of these improvements is minimal and includes occasional cleaning and minor repairs, if damaged. Repairs, if needed, will be performed by the OMBA. Any routine maintenance will be performed by City of Edmond Parks Department. The pavilion and changing station will be soundly constructed with a predicted lifespan of 30 years.

Partnership Value:

As a partner, the OMBA is critical to the success of the project. The OMBA will provide all construction labor as an in-kind donation to the project.

Established in 1996, OMBA is a non-profit organization dedicated to promoting and supporting mountain biking in Oklahoma. OMBA works with private, city, state and federal landowners to obtain land use permits, build and maintain mountain bike trail systems, and to address erosion concerns on trails across Oklahoma. The ten miles of existing trails on the USACE property were constructed by OMBA, via a Memo of Understanding beginning in 2022. The trails are designed to be multi-use, allowing not only mountain biking but running and hiking as well. Since the establishment, OMBA members and volunteers have performed all maintenance and upkeep for the Dam Trails saving USACE an estimated costs of over \$20,000 in labor hours and materials since establishing the trails. The Dam Trails has hosted 4 special events approved through the USACE office, which included our 3

mountain bike races and a skills workshop hosting over 120 individuals of all ages for each event. OMBA will continue to host many more events for the future as the community interests for these events continue to grow. The Arcadia team from OMBA routinely collaborates with organizations in promoting recreation at the Arcadia Trails. In conjunction with OKC Bike Club, a local nonprofit that promotes cycling among elementary school children, we hosted a 'Get More Kids on Bikes' event whereby personal guides introduced youngsters to mountain biking, riding with them on the local trails. For the last two years we partnered with Oklahoma Tour de Dirt (<https://tourdedirt.com>) hosting a race as part of the statewide championship series. This involved a significant amount of planning and preparation, as well as local sponsorships and vendors, ultimately bringing over 200 visitors to the trails on race day. Last year we partnered with a local chapter of Trail Life USA (<https://www.traillifeusa.com/>) to construct a kids loop at the Post Road trailhead. This loop is beginner-friendly with a few gentle challenges so that novice riders can get a feel for the sport in a setting that is both fun and enjoyable.

Recreational Value:

The project will significantly improve the overall recreational experience at Arcadia Lake. The lake is most known for its camping and typical recreational lake activities. However, since our partnership began, mountain bike riding has also become a hot sport for riders all around the Oklahoma City area. An increase of riders also means more usage of parking lots. There are two trailheads by which to access the USACE/Dam Trails. The East entrance near the Arcadia Lake Park office provides a parking lot and restrooms. During peak use times the parking lot is full. Edmond's long-range plans include moving the park office (along with the restrooms) to another location in the park, farther from the Dam Trails. Park visitors accessing the USACE trails are encouraged to use the Post Road Trailhead entrance. Amenities at present consist of a gravel parking lot and porta-potty type restroom. Visitors arriving after work have nowhere to change into exercise clothes. Resting or socializing before or after visiting the trails is impractical as there is nowhere to sit or rest. OMBA provided two substantial picnic tables however there is absolutely no shade at the trailhead. It's not unusual to need to adjust or repair a bicycle when riding far from any mechanical services. Bike repair stations are extremely handy in that they provide essential cycling tools and an air pump, in a fixed location. All users will benefit as this project will solve several problems, thereby improving the recreational experience for beginning and expert riders.

Environmental Stewardship Value:

As with the natural surface trails, these amenities will have nearly zero environmental impact, thus helping fulfill the USACE commitment to sustainability. Riders come to this project because of the natural surface trails and because of the beauty of nature. Frequent riders will come help and volunteer their time and hand tools to upkeep the trails and to limit additional footprint outside of the established trails. Many of the volunteers take pride in the mission of sustaining the environment and to promote shade and foliage for scenery and also comfort with recreating. Riders respect the trails and follow what is already established to avoid creating additional misuse of the lands.

Communication & Education Value:

As mentioned above in the "Partnership Value" section, USACE, with big help from OMBA, has used these trails for community outreach events such as partnering with the OKC Bike Club for "Get More Kids on Bikes" event, Tour de Dirt Event, and working with local scout groups. OMBA consistently stresses the importance of being good stewards at our local trails. The principal contribution of this project is to enhance the recreational value of the USACE property at Arcadia Lake. The trails provide an equal opportunity for riders of all ages to enjoy the trails. Whether it is for a race or for a casual stroll, groups and individuals from all over come specifically to practice their skills and to enjoy the community. As a destination for families and individuals, high caliber park improvements have a direct positive impact on quality of life for those living in Edmond, Oklahoma City, and the surrounding community.

Supporting Diversity, Equity, Inclusion, and Access Goals:

These amenities, like the trail system overall, will be free and available to all users. OMBA built the trails with all types of riders in mind, from beginners to experts. OMBA members routinely work with local groups to raise awareness about the trail system and to involve others in improvements. Earlier this year we worked with an Eagle Scout candidate from a local troop to construct an 80-yard boardwalk feature on one of the trails. Last

year, in conjunction with a group of teenagers from Trail Life USA the team built a quarter-mile 'kids loop' adjacent to the trailhead for young riders to try out real mountain biking in a safe setting.

Corps Foundation Bonus Cost Break Down:

Conclusion:

In the event partial funding is available, we would accept a lesser amount to complete some portion(s) of the project. In summary, the increased use of the Post Road Trailhead has created demand for basic improvements. A well-constructed pavilion will provide a designated place that is covered and shaded for all users. The changing station makes it easier to exercise before or after work. The bike repair station provides basic tools and an air pump to meet mechanical needs.

NOTE: To show foresight, commitment, and planning, it is REQUIRED to include maps/pictures/plans/specs as part of your overall package. Failure to include supporting attachments will result in points deductions.

Double click on spreadsheet to access data entry fields and to enter Partner names.

You MUST enter partner names into the spreadsheet:

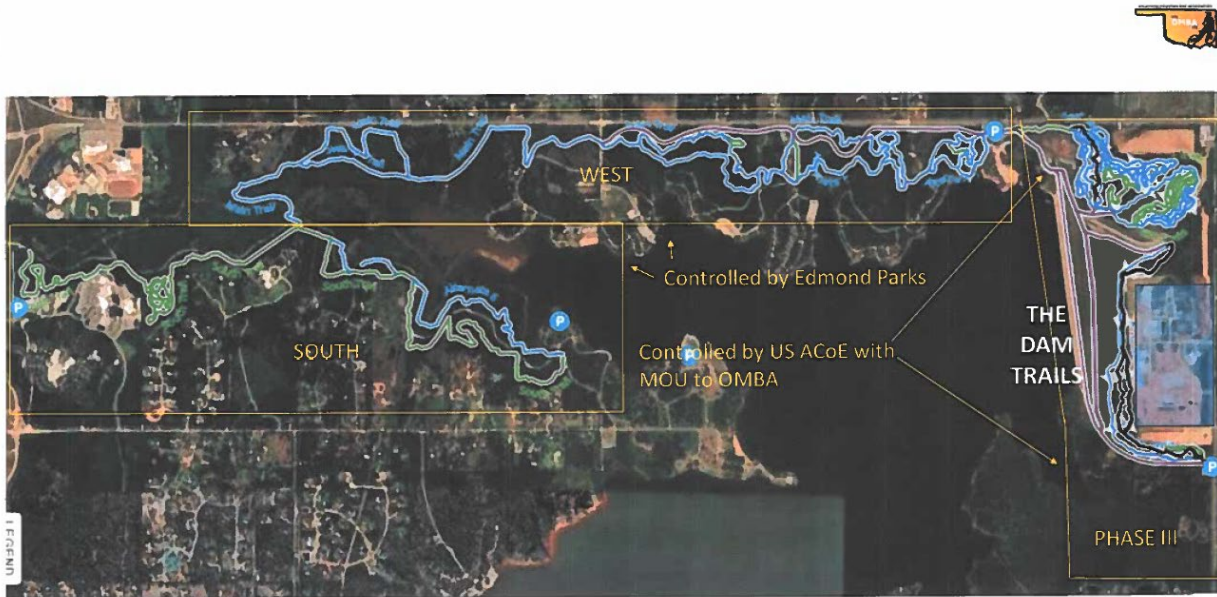
	Local Corps Office	Handshake Funds	OMBA (this project)	Boy Scouts of America	OKC Bike Club	Trail Life
Salaries	\$2,000	N/A	\$0	\$0	\$0	\$0
Travel	\$0	N/A	\$0	\$0	\$0	\$0
Materials and Supplies	\$500	\$14,000	\$2,000	\$0	\$0	\$0
Equipment Use	\$1,000	\$0	\$100	\$25	\$0	\$0
Funds Contributed	N/A	N/A	\$0	\$0	\$0	\$0
Personal Property	N/A	N/A	\$0	\$0	\$0	\$0
Volunteer	N/A	N/A	\$5,150	\$2,000	\$1,000	\$2,000
In-Kind Services	N/A	N/A	\$0	\$0	\$0	\$0
Other (explain below)	\$0	\$0	\$0	\$0	\$0	\$0
Total	\$3,500	\$14,000	\$7,250	\$2,025	\$1,000	\$2,000
Share of Total Cost	10.2%	40.8%	21.2%	5.9%	2.9%	5.8%
	51.1%					

	Oklahoma Tour de Dirt	City of Edmond	Partner 7	Partner 8	Partner 9	Partner 10
Salaries	\$0	\$2,500	\$0	\$0	\$0	\$0
Travel	\$0	\$0	\$0	\$0	\$0	\$0
Materials and Supplies	\$500	\$300	\$0	\$0	\$0	\$0
Equipment Use	\$0	\$200	\$0	\$0	\$0	\$0
Funds Contributed	\$0	\$0	\$0	\$0	\$0	\$0
Personal Property	\$0	\$0	\$0	\$0	\$0	\$0
Volunteer	\$500	\$0	\$0	\$0	\$0	\$0
In-Kind Services	\$0	\$0	\$0	\$0	\$0	\$0
Other (explain below)	\$0	\$0	\$0	\$0	\$0	\$0
Total	\$1,500	\$3,000	\$0	\$0	\$0	\$0
Share of Total Cost	4.4%	8.8%	0.0%	0.0%	0.0%	0

	Partner 11	Partner 12	Partner 13	Partner 14	Partner 15	Total
Salaries	\$0	\$0	\$0	\$0	\$0	\$4,500
Travel	\$0	\$0	\$0	\$0	\$0	\$0
Materials and Supplies	\$0	\$0	\$0	\$0	\$0	\$17,300
Equipment Use	\$0	\$0	\$0	\$0	\$0	\$1,325
Funds Contributed	\$0	\$0	\$0	\$0	\$0	\$0
Personal Property	\$0	\$0	\$0	\$0	\$0	\$0
Volunteer	\$0	\$0	\$0	\$0	\$0	\$10,650
In-Kind Services	\$0	\$0	\$0	\$0	\$0	\$0
Other (explain below)	\$0	\$0	\$0	\$0	\$0	\$0
Total	\$0	\$0	\$0	\$0	\$0	\$34,275
Share of Total Cost	0.0%	0.0%	0.0%	0.0%	0.0%	100%

Explanations: Volunteer costs computed at \$25 per hour. Note the contribution by OMBA reflected here is limited to this project. OMBA routinely spends over 600 volunteer hours annually maintaining and repairing the Arcadia Trail system. Materials and supplies cost approximately \$3,000 annually. OMBA contributes around \$40k annually to the trails.





THE DAM TRAILS PHASE II

- Area is under US ACoE control with MOU to OMBA
- ✓ Cedar Remediation in plan by City of Edmond (only 20' in along Dam Road rounding the curve).
- ✓ POST LOT CONNECTOR – Park Office Lot is saturated in peak season. To promote use of the large Post Rd Parking Lot, (near the water tower) we would like to add fun natural surface directional trails.

Post Connector Trails and Kids Loop

- ✓ Postmortem Fast and technical one-way downhill northbound trail – future alternate downhill for more variety
- ✓ The long-term plan is a one-way trail both directions, but need to mitigate standing water in narrow section
- ✓ Southbound trail (Return to Sender) Trail currently in-work – Est. completion 2/23
- ✓ Kids loop (Poster Child) featuring low-risk skill development for kids new to dirt trails – Trail Life project (requires marking and ACoE approval – in-work (Est. completion 3/23)
- ✓ Southbound North Side – Maximize one-way trail
- CONNECTOR to Main Drain – this trail will require the pipeline pedestrian crossing to be built



THE DAM TRAILS PHASE II
Post Parking Lot Amenities (prioritized)

- 1. Picnic Tables
- 2. Pavilion
- 3. Hardened Restrooms (currently Port-a-potty)
- 4. Parking Lot Lighting
- 5. Changing Areas
- 6. Bike Tool/Pump Station
- 7. Bike/equipment Sash Station
- 8. Maps and Signage

