

This month, USACE submitted the final draft of its annual Sustainability Strategic Plan on electric vehicles (EVs)/zero-emission vehicles (ZEVs) to the Assistant Secretary of the Army, (Civil Works) (ASA(CW)). Read below for ZEV Strategic Sustainability Plan (SSP) highlights information on low-speed EV options, and a telematics update.

ZEV STRATEGIC PLAN

Thanks to the MSC Leads for their review and input of the ZEV SSP. ZEV acquisition and EVSE implementation continue as the focus for the ZEV Strategic Plan. Read on for key elements of this year's plan.

Priority Actions for FY25:

- Complete site assessments at Civil Works (CW) Operations & Maintenance (O&M) projects
- Perform charging temperature and EVSE needs analysis for cold climates
- Implement 100% fleet telematics for data analysis targeted for FY25

By the Numbers:

- There are approximately **209** site assessments left to complete, and **268** site assessments already completed at CW O&M locations
- **79 vehicles** were identified for elimination in FY25
- Telematics are currently installed on **2,507 GSA vehicles**, which equates to **38% of the USACE fleet**

Challenges and Solutions:

Challenge: *Aligning EVSE installation with ZEV arrival*

Solution: Prioritize CW sites with ZEVs on site or on order for EVSE installation funding

Challenge: *Ensuring EVSE availability at leased sites*

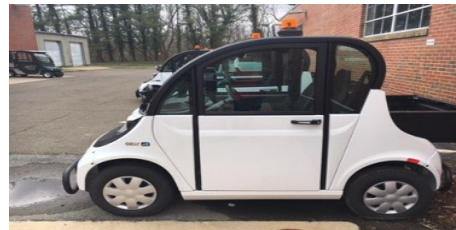
Solution: 33% of USACE sites are leased. USACE will continue to coordinate with lessors to get EVSE installed for ZEV acquisitions.

LOW SPEED EV OPTIONS

What are low speed electric vehicles (LSEVs)? LSEVs are four-wheeled vehicles with a speed range between 20-25 MPH.

To count as an LSEV, a vehicle must:

1. Be manufactured primarily for transporting no more than 10 individuals.
2. Include a specific off-highway operation feature.
3. Not exceed more than 3,000 pounds in gross vehicle weight.



USACE LSEVs at Washington Aqueduct



Why is this important? These are great alternative EV options available for lease from GSA. LSEVs can replace vehicles that do not need to reach high speeds or carry many people from one place to another. They offer a cheaper alternative for complying with ZEV acquisition targets when trading in vehicles. More information can be found on GSA Advantage [here](#).

TELEMATICS UPDATE

Starting October 1, 2024, GSA Fleet monthly lease rates will increase by 15% to cover operating costs and include the ProPlus Telematics subscription fee.

Why is the rate increasing?

Rate increases are normal. GSA annually reviews lease rates for potential adjustments. In addition, the increase covers the cost of ProPlus Telematics, which was previously billed separately at a flat rate of \$13 per vehicle.

Why do we need the ProPlus Telematics subscription?

- Telematics offers a wealth of valuable data-driven insights to help optimize fleet management and drive cost savings; these insights are only accessible through ProPlus.
- Telematics are required to be installed on all USACE vehicles by September 30, 2024, per OPOD 2024-21.

What does this mean for me?

- Be aware that rate increases are likely to continue at this pace, as GSA works to bring their rates in line with current market prices. Work with your site and District to budget for these anticipated adjustments.
- All vehicle owner/lessors must activate your telematics account for all GSA-leased vehicles.
- Watch for additional information on this rate change and telematics as the new FY approaches.

For any questions regarding budgeting, GSA leases, telematics, or the GSA Fleet rate increase, please reach out to Marti Sedgwick.

GSA BPA TASK ORDER AWARDS

Nashville District has awarded their second GSA Blanket Purchase Agreement (BPA) Task Order for Cumberland Annex! This is the second CW O&M GSA BPA contract for USACE, and the District is currently working on a third Task Order for two additional sites. Detroit District has also been working hard to award their first GSA BPA Task Order. A big kudos to both Districts for their hard work pioneering GSA BPA contracts for EVSE implementation!

Have installs or other progress to share?
Contact the POCs listed below with photos to be featured in the next newsletter!

If you have any questions on EVs, EVSEs, or related subject areas, please reach to one of the names listed below. For questions related to CW sites, contact Mr. Scot Dahms. For RF sites, contact Ms. Marti Sedgwick.

National Sustainability, Environmental Compliance,
and Energy Program Manager
Ms. Myrna Lopez-Ortiz
Myrna.I.Lopez-Ortiz@usace.army.mil
Civil Works Operations

Logistics/Directorate of Logistics/G4, DRU Engineer
Ms. Marti Sedgwick
Margaret.W.Sedgwick@usace.army.mil
(910) 232-9600
USACE Logistics (ULA)

Geospatial Program Manager, Installations Support
Mr. Jay Plucker
Julius.Plucker2@usace.army.mil
+49 (0) 611 9744 2736
CENAU, Europe District

AMP/CUP Program Manager
Mr. Murty Dinivahi
Murty.V.Dinivahi@usace.army.mil
(972) 302-7792
Military Programs

Huntsville Program Manager
Mr. Jason Bray
Jason.A.Bray@usace.army.mil
(256) 895-1514
Huntsville Engineering Center

LRD Sustainability Program Manager
Mr. Scot Dahms
Scot.H.Dahms@usace.army.mil
(765) 327-1531
Great Lakes and Ohio River Division

U.S. ARMY CORPS OF ENGINEERS – HQ NATIONAL SUSTAINABILITY AND ENERGY PROGRAM
WASHINGTON, DC

<http://www.usace.army.mil/Missions/Sustainability.aspx>