

CLARENCE CANNON DAM & MARK TWAIN LAKE



A SIGNAL OF THE FUTURE

Timothy Eash
Assistant Operations Manager
2017 NRM Conference
Norman, Oklahoma
19 APR 2017



"The views, opinions and findings contained in this report are those of the authors(s) and should not be construed as an official Department of the Army position, policy or decision, unless so designated by other official documentation."



US Army Corps
of Engineers®



Clarence Cannon Dam & Mark Twain Lake

PARTNERSHIP

- Strengthen partnership between USACE and Ralls County Electric Cooperative to serve mutually beneficial interests at the Mark Twain Lake Project by providing Wi-Fi services for the public.



US Army Corps
of Engineers®



Clarence Cannon Dam & Mark Twain Lake

PURPOSE

- Wi-Fi availability in recreation areas and campgrounds is the #1 public request.
- Visitors to public lands and facilities want to connect to the digital world.
- Increase visitation and utilization of recreation facilities.



US Army Corps
of Engineers®



Clarence Cannon Dam & Mark Twain Lake

TIMELINE

- **2012** - Ralls County Electric Cooperative (RCEC) receives federal grant to install fiber optic cable to members.
- **2013-2014** - RCEC completes installation of fiber optic cables to electric meter sets and begins to offer communication services through Ralls Technologies a subsidiary of Ralls County Electric Cooperative. The Mark Twain Lake Project was included in the fiber optic cable installation. Right of way (ROW) easements were modified to allow underground installation of fiber optic cable within the primary electric wire corridors in recreation areas.
- **2016** - The Mark Twain Lake Project was approached by Ralls Technologies wanting to partner to provide Wi-Fi services at the project.
- **2017** - Real Estate is in process of issuing a license to proceed with Wi-Fi Installation in recreation areas at the Mark Twain Lake Project.



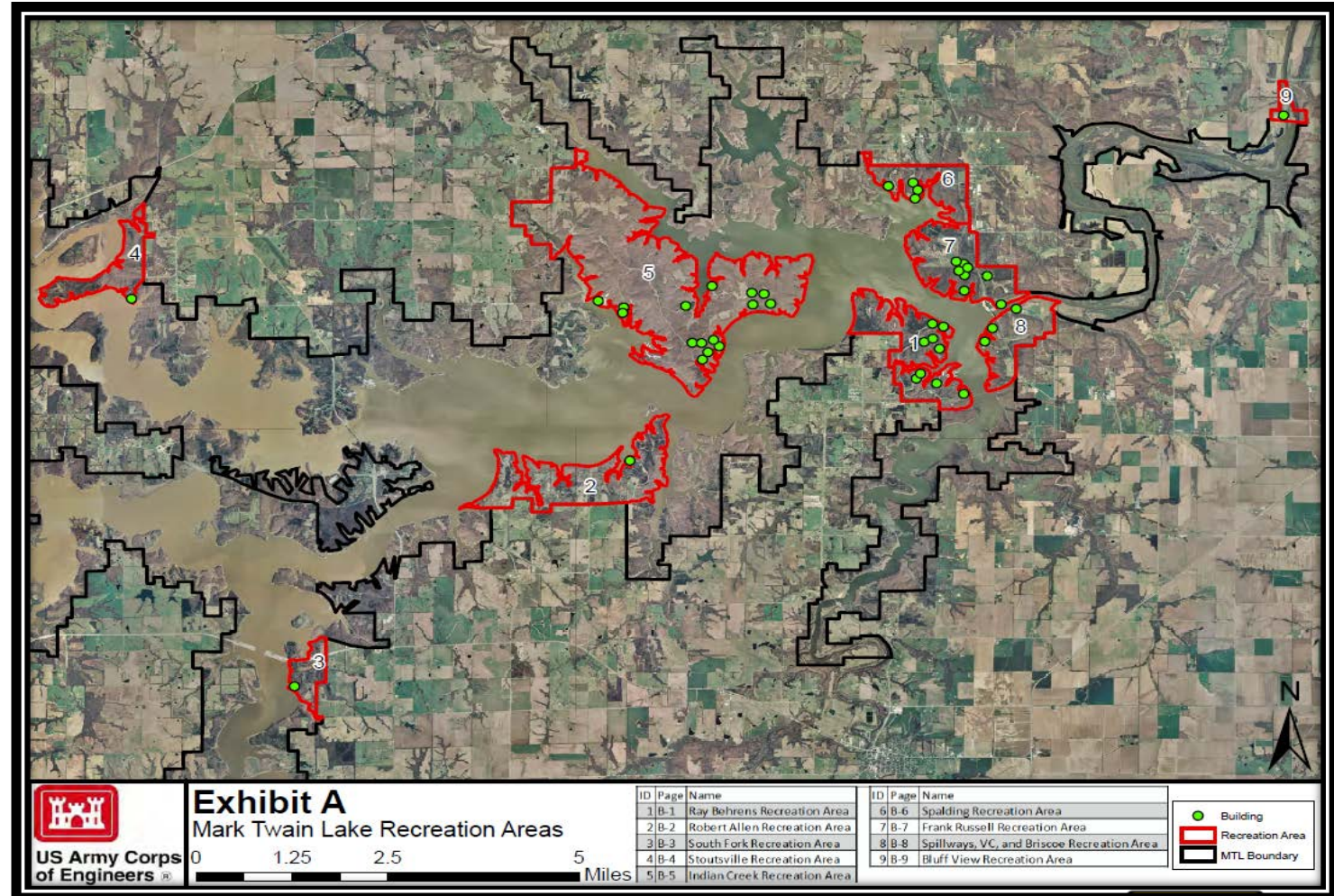
US Army Corps
of Engineers®



Clarence Cannon Dam & Mark Twain Lake

DEPLOYMENT

- All recreation areas have the potential to receive Wi-Fi.
- Wi-Fi installation will begin using a phased approach.
- Five phases of deployment identified thru the time frame of the license.
- Heaviest use areas will deploy first to determine feasibility and level of development.



Clarence Cannon Dam & Mark Twain Lake

EQUIPMENT AND MAINTENANCE

- All equipment including antennas and base stations shall be provided by the grantee.
- The grantee shall install all equipment in government public buildings according to the license.
- The government shall provide suitable space for the equipment.
- The grantee shall be responsible for all maintenance.



Fiber Optic Cable Splice



Fiber Optic Termination On Building



Antenna Located on Building



Clarence Cannon Dam & Mark Twain Lake

TYPE OF SERVICE AND CAPABILITY

- The grantee has chosen to use a “Subscriber” type network instead of an “Open” network. The subscriber network will allow users to choose their period of use.
- 50 Gb up and down speed.
- The 2.4 Ghz equipment will allow compatibility for mobile devices.
- The grantee shall be responsible for providing user help and assistance line.



Clarence Cannon Dam & Mark Twain Lake

CONCLUSION

- All transactions for Wi-Fi service shall be managed thru Ralls Technologies at no cost to the government.
- Wi-Fi availability will meet the needs of the public and also benefit the grantee with additional usage of the fiber network and USACE with increased utilization of recreational facilities.
- Ralls County Electric Cooperative/Ralls Technologies is a non-profit, member owned electric cooperative that is the sole provider of power delivery services and internet accessibility within the Mark Twain Lake Project area without further infrastructure investment.

Timothy J. Eash
Assistant Operations Manager
U.S. Army Corps of Engineers
Clarence Cannon Dam & Mark Twain Lake
Monroe City, MO 63456
timothy.j.eash@usace.army.mil
573-735-4097

File Name



US Army Corps
of Engineers®

