



# *Check-In, Check-Out Web Hub*

## **Terrestrial Invasive Weed Prevention Program**

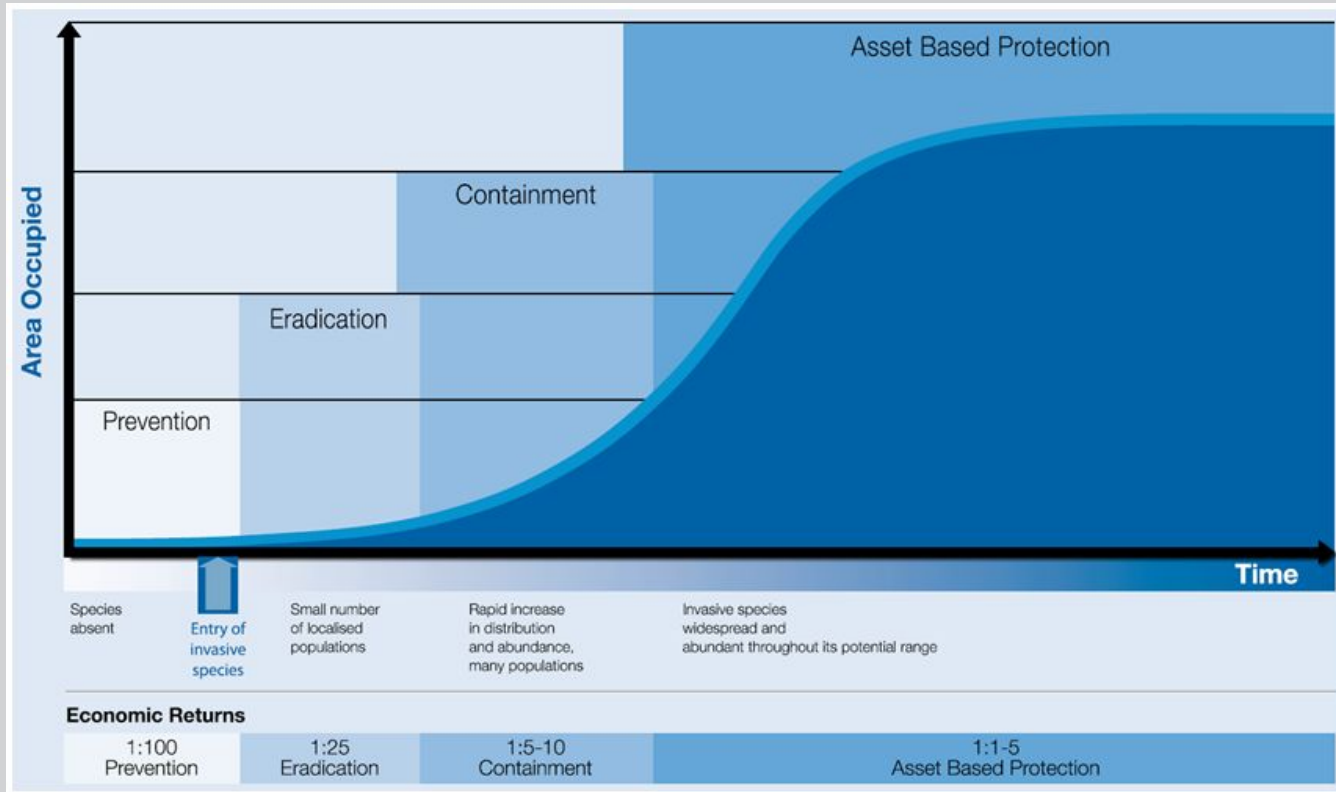
© 2021 CD<sup>3</sup>, General Benefit Corporation

# Invasive Problem: Terrestrial



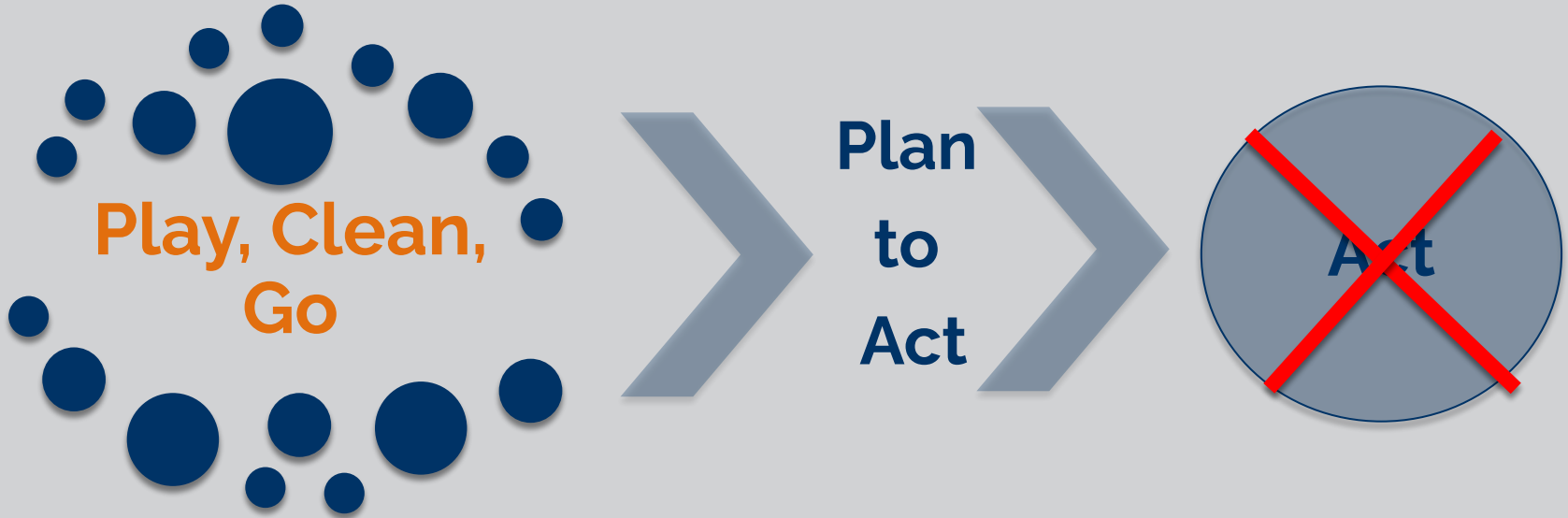
- Invasive species are reintroduced by people
- Public needs education on how to stop weed spread
- Public needs the tools to take action at a seed free site to not become a source of spread
- Public needs to have oversight and/or incentives to change behavior

# Invasion Curve: Economic Reality



**“An ounce of prevention is worth a pound of cure.”**

# What the public is doing...



**FAIL TO TAKE ACTION**

# Site Specific Instructions & Signage



#PLAYCLEANGO  
PlayCleanGo.org

**DONTMOVE FIREWOOD.org**  
STOP AQUATIC Hitchhikers!  
BUGGY FISH.com  
Play Clean Go  
STOP INVASIVE SPECIES IN YOUR TRACKS.  
PlayCleanGo.org

#PLAYCLEANGO  
PlayCleanGo.org

**DONTMOVE FIREWOOD.org**  
STOP AQUATIC Hitchhikers!  
BUGGY FISH.com  
Play Clean Go  
STOP INVASIVE SPECIES IN YOUR TRACKS.  
PlayCleanGo.org

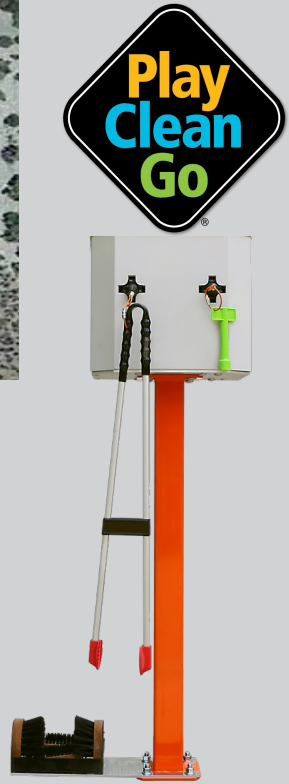
#PLAYCLEANGO  
PlayCleanGo.org

**Play Clean Go**  
STOP INVASIVE SPECIES IN YOUR TRACKS.  
PlayCleanGo.org  
STOP AQUATIC Hitchhikers!  
BUGGY FISH.com  
**DONTMOVE FIREWOOD.org**

#PLAYCLEANGO  
PlayCleanGo.org

**Play Clean Go**  
STOP INVASIVE SPECIES IN YOUR TRACKS.  
PlayCleanGo.org  
STOP AQUATIC Hitchhikers!  
BUGGY FISH.com  
**DONTMOVE FIREWOOD.org**

Instructions based upon site-specific tools & species present



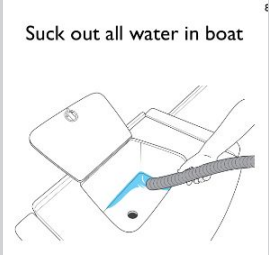
**Signage at Access Point:  
Check-In, Check-Out**

@

[www.YOUR\\_URL.com](http://www.YOUR_URL.com)

“[www.ACEinvasives.com](http://www.ACEinvasives.com)”

# Check-In, Check-Out Web Hub



- Custom Designed
- Scalable
- Social Contract
- Incentive Programs



# Sign + Social Connectivity



## Make it Social:

*"I walked at ..."*

## Be a Community

*"You take the NAISMA Pledge..."*

## Make it a Game

*"You get a..."* (LOCAL COUPONS)







## User provides:

- Vehicle Licence
- Zip Code
- Email

**Is it enforceable?**

**What do you fine?**

**Who does the checking?**



## Check-In, Check-Out Web Hub

- 5 Sites Pilot
- Customization
- Standard Icons



## CD<sup>3</sup> Roadside or other tool set

- Unit, Hand tools
- Signage at site

# Model Options



Outpost



Roadside

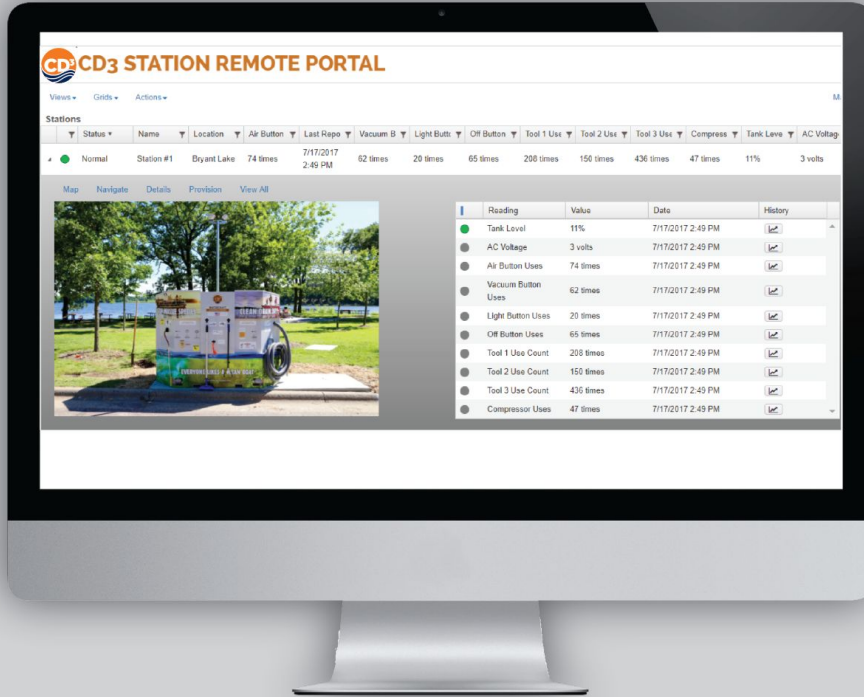


Wayside Solar

# Public Infrastructure & Education



# Online Data Platform



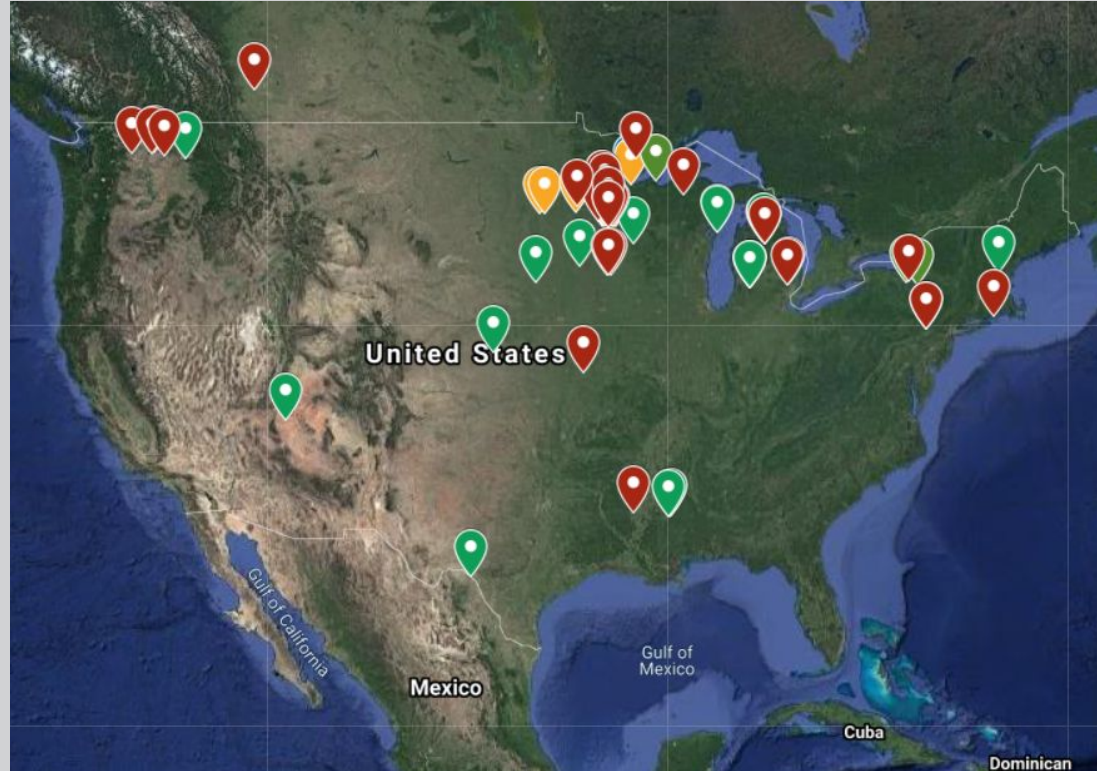
- Tool Use Reports
- Cleaning Sessions
- Real-Time Alerts
- Maintenance
- GPS Tracking

[www.MyCD3Station.com](http://www.MyCD3Station.com)

# North America Adoption



- 17 States
- Canada
- Sole Source
- 500,000 Tool Uses



# Summary



Empowering the public to take ACTION



Plan  
to  
Act





# Questions?



Mark Apfelbacher,  
President

[Mark@cd3systems.com](mailto:Mark@cd3systems.com)

612-414-0961

[www.cd3systems.com](http://www.cd3systems.com)