

# THE COLLABORATION & PUBLIC PARTICIPATION COMMUNITY OF PRACTICE PRESENTS:

## Crowdsourcing with Web Maps to Support Collaboration & Public Engagement

**The meeting will start at 1:00 PM Central Time**

To access the audio please select **“Call Me”**.

If required, use security code: **4321**

- “Listen Only” is activated, only the host can be heard
- Submit questions in the Chat Box to Everyone
- Indicate the number in your group through the Chat Box
- The presentation is being recorded and will be shared after the meeting



# CROWDSOURCING WITH WEB MAPS

## FOR COLLABORATION AND PUBLIC ENGAGEMENT

**Anne Baker**, Collaboration & Public Participation Center of Expertise

**Alex Hoxsie**, Planning Branch, Chicago District

**Andrea Carson**, Planning and Environmental Branch, Pittsburgh District

August 7, 2018



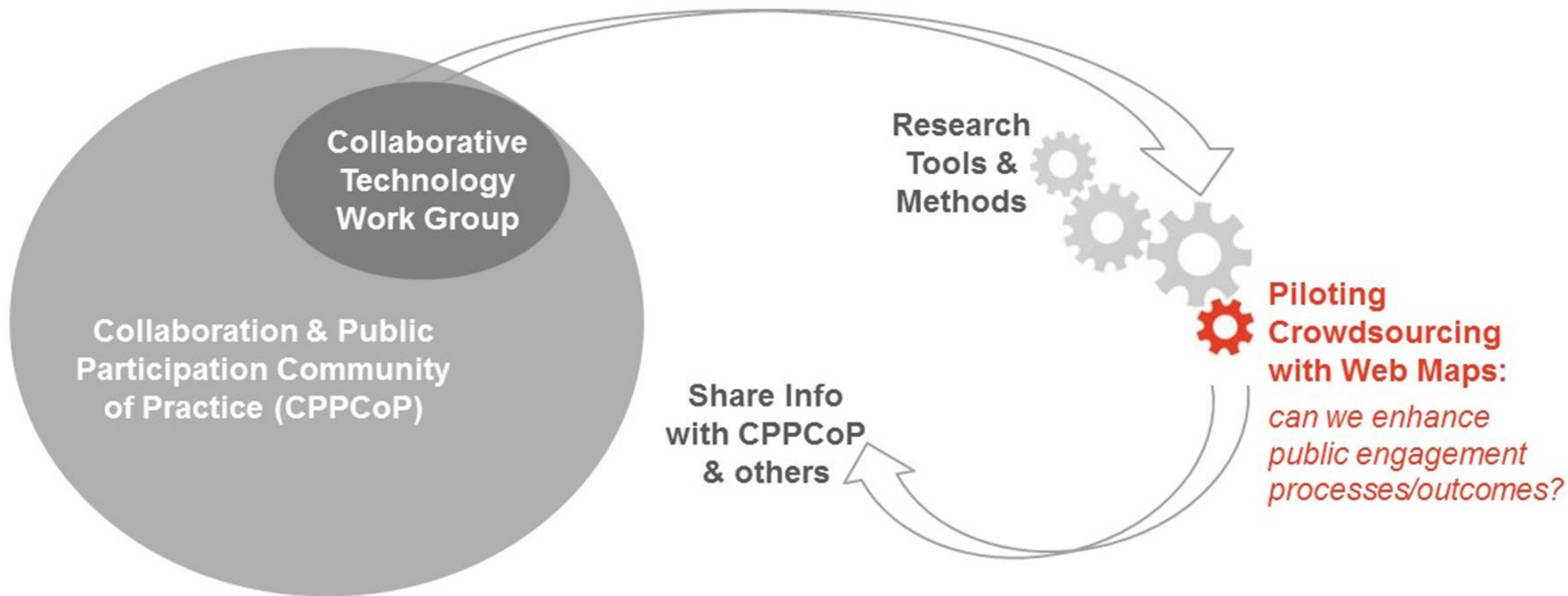
U.S. ARMY CORPS OF ENGINEERS  
**Collaboration & Public Participation**  
CENTER OF EXPERTISE



US Army Corps of Engineers



# EXPLORATION



# GLOSSARY

---

**Crowdsourcing** allows individuals to collectively contribute ideas, comments, time, effort, expertise and/or funds to a project or cause...via high tech platforms.



WIKIPEDIA

*Today's webinar covers the crowdsourcing of:  
**comments from members of the public...via ArcGIS Online web maps.***

**Web maps** are accessible online, and map users may alter or choose what the web map will show, including the addition of data and comments.



# SAMPLE ARCGIS ONLINE APPLICATIONS

**Storymap Crowdsourcing** – users add photos, stories about specific locations  
<https://storymaps.arcgis.com/en/app-list/crowdsourcing/>

**Crowdsourcing Polling** – users add ‘votes’ associated with specific locations  
<http://solutions.arcgis.com/local-government/help/crowdsourcing-polling/>

**Crowdsourcing Reporter** – users ‘report’ observations about specific locations  
<http://solutions.arcgis.com/local-government/help/crowdsourcing-reporter/>

- Accessible on computers, tablets, smart phones
- Users can choose to submit anonymously
- All comments are displayed publicly (unless filtered)
- Map-creators can export and sort data gathered (e.g. excel format)

The screenshot shows the 'Crowdsourcing Reporter' web application. At the top, there is a header with the application name and a menu icon. Below the header, the main content area is titled 'Road Problems' and contains a form for reporting an issue. The form is divided into two main sections: '1. Enter Information' and '2. Select Location (Tap/click on map to select location)'. In the '1. Enter Information' section, there is a dropdown menu for 'Type of Problem (required)' with 'Pothole' selected. Below this, there is an 'Email' field with 'email@me.com' entered, and a 'Date Submitted' field with 'March 24, 2015' selected. There is also an 'Attachments' section with a 'Select File' button. In the '2. Select Location' section, there is a search bar with the placeholder text 'Enter address to search' and a search icon. Below the search bar is a map showing a street labeled 'EOLA RD' with a location marker. The map has zoom in (+) and zoom out (-) buttons on the right side.

## CHICAGO DISTRICT:

# CROWDSOURCING PILOT

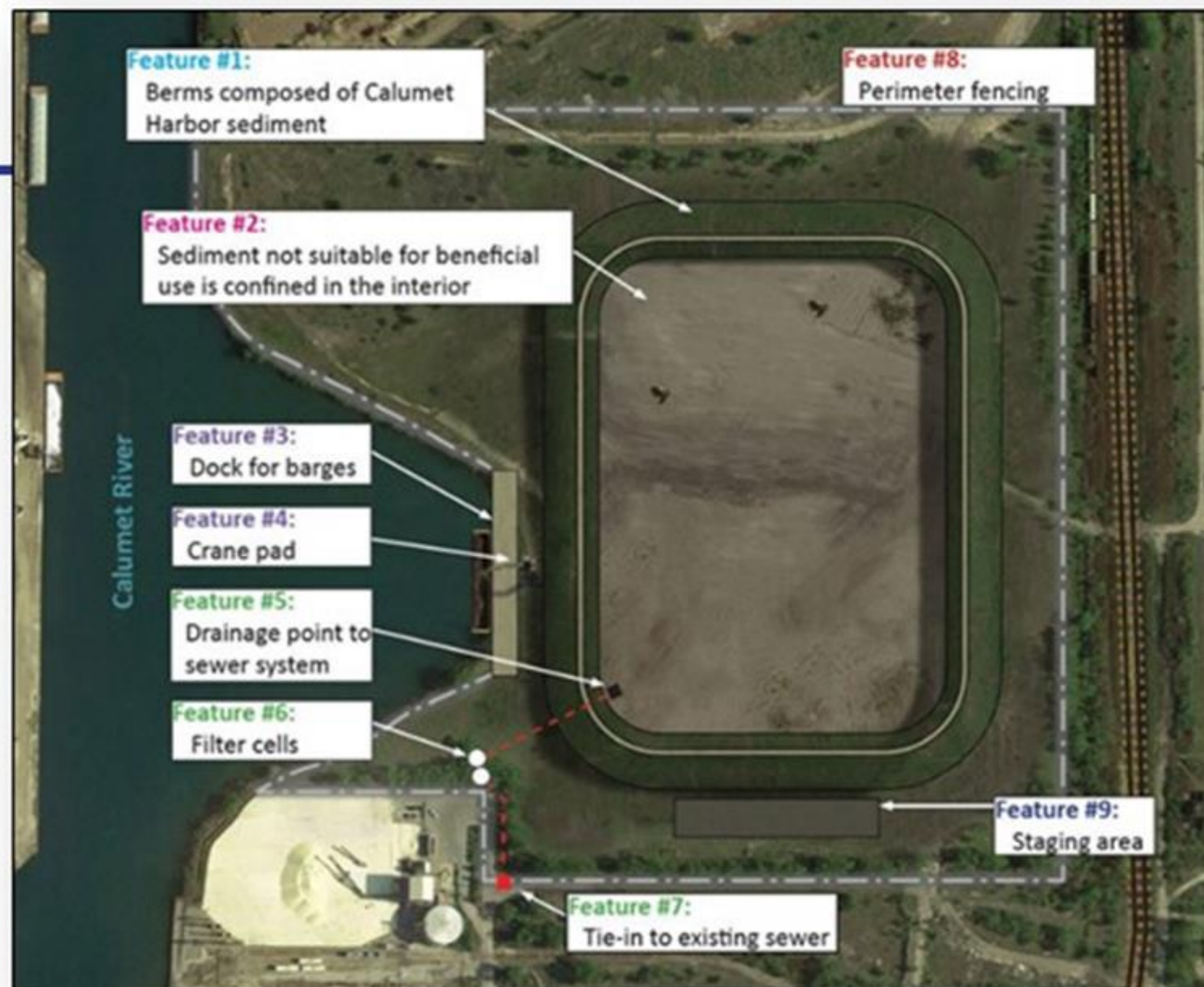
## CALUMET HARBOR AND RIVER / CHICAGO AREA WATERWAY SYSTEM DREDGED MATERIAL MANAGEMENT PLAN



**Presenter:** Alex Hoxsie, Planner/Landscape Architect, Chicago District

# A NEW SEDIMENT MGMT. FACILITY

- **The Corps needs a new facility to manage contaminated material from the Calumet River**
  - Approximately 40 acres
  - “Donut” design using earthen berms
  - Located adjacent to the Calumet River



## PHASE I

Step 1: Berms constructed Calumet Harbor sediment and a waterproof liner. Vegetation planted for erosion control

Step 2: Sediment not suitable for beneficial use would be confined



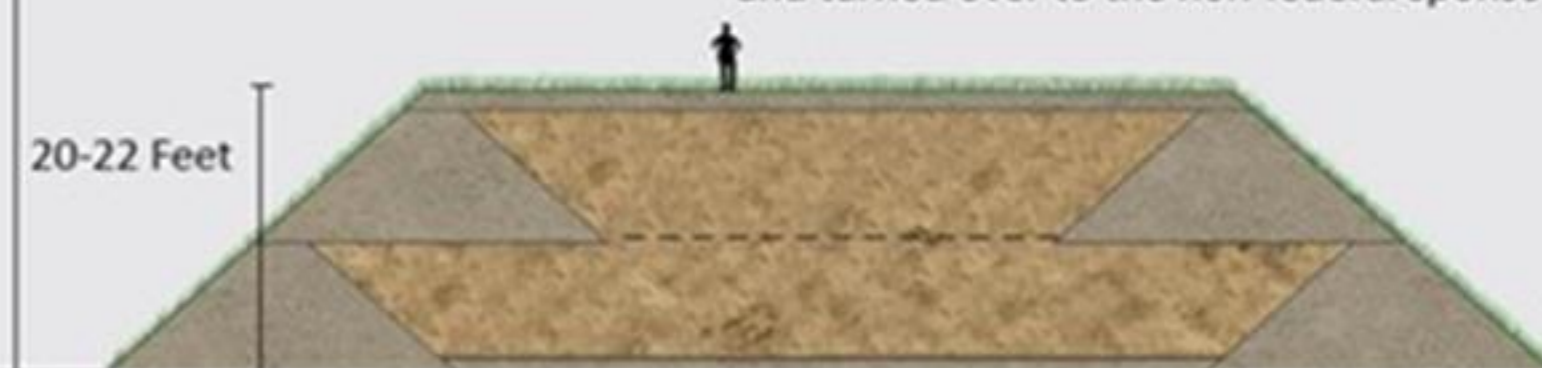
## PHASE II

A second level of berms would increase the facility's capacity.



## CAPPED AND CLOSED

Once full, the facility would be capped, closed, and turned over to the non-federal sponsor.



# POTENTIAL SITES IDENTIFIED

- **LRC analysis has identified 9 potential sites that met screening criteria developed for site selection**
  - Process designed to increase opportunity for sponsor/public to more directly influence site selection
  - Believed to have similar costs based on screening criteria
  - Attempt to respond to criticism voiced in the past – “Cost shouldn’t dictate”

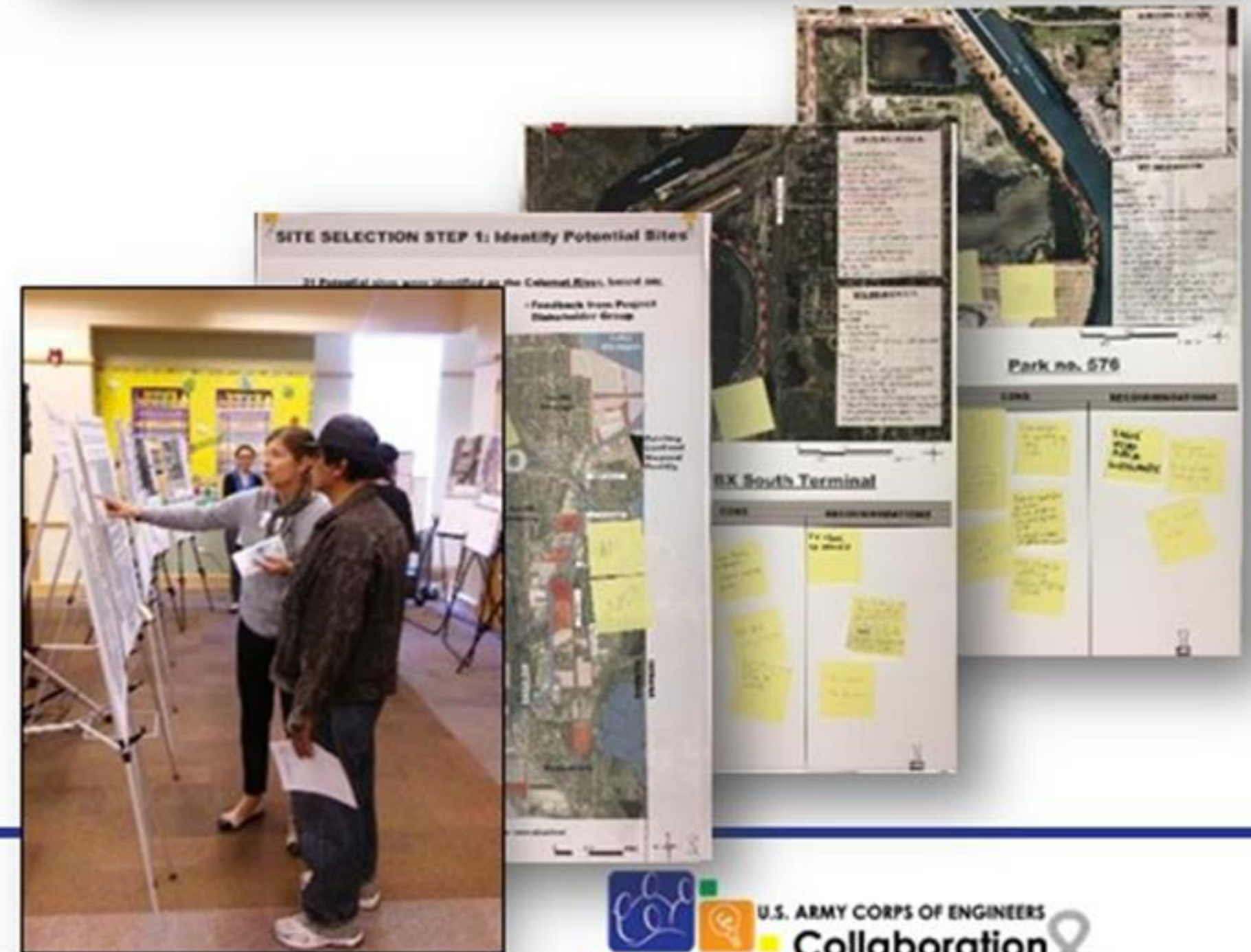
**Presented sites at 2 public workshops,  
launched Crowdsourcing Tool**



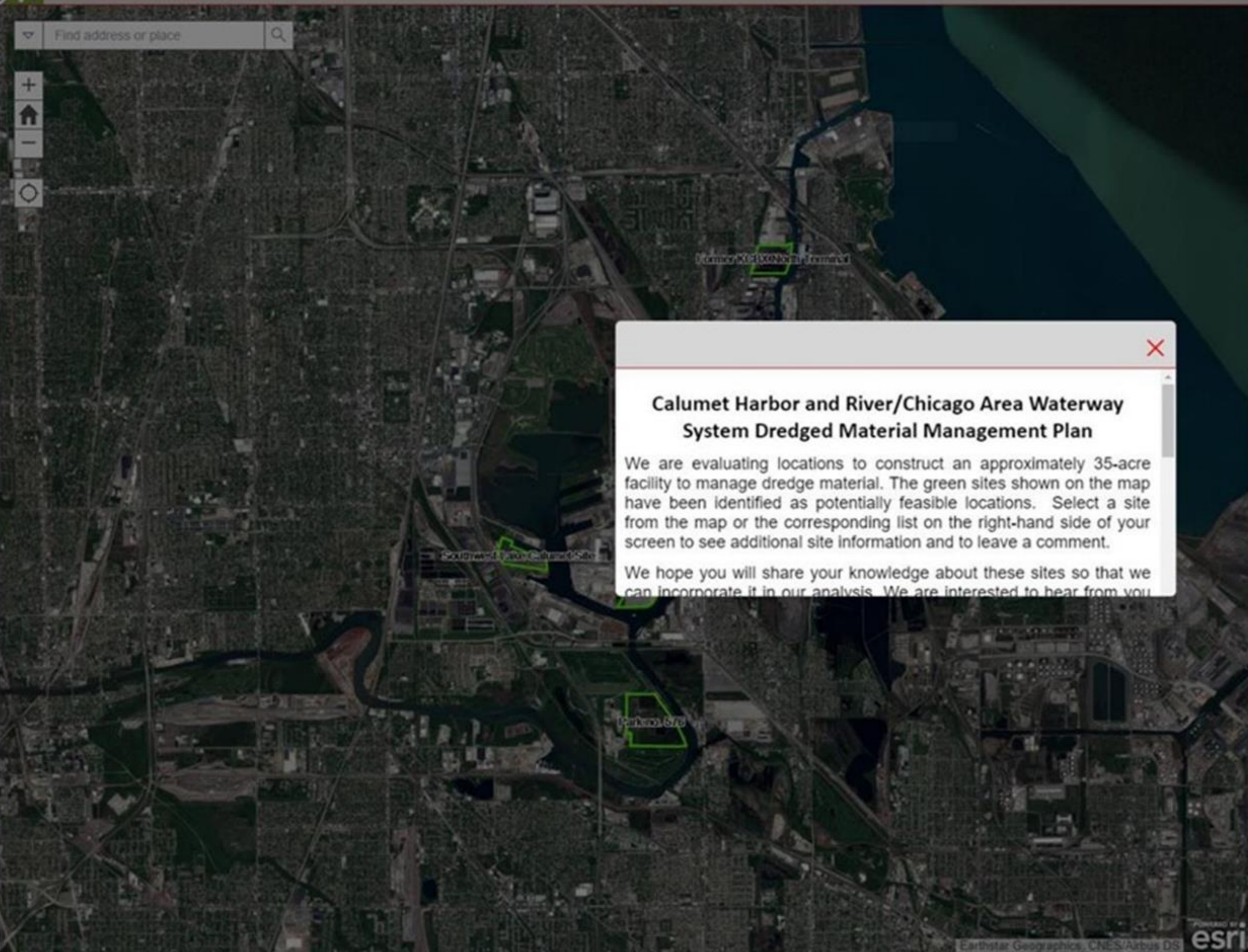


# WHY CROWDSOURCE?

- We wanted to create as many opportunities for public involvement in this process as possible.
- Provide multiple formats to increase participation
  - Scoping
  - Created a key stakeholder working group
  - Hosted public workshops
    - Site selection posters (interactive)
    - Comment cards
    - Spoken comments
  - Crowdsourcing Mapping pilot



# Public Comments



**Calumet Harbor and River/Chicago Area Waterway System Dredged Material Management Plan**

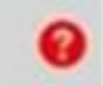
We are evaluating locations to construct an approximately 35-acre facility to manage dredge material. The green sites shown on the map have been identified as potentially feasible locations. Select a site from the map or the corresponding list on the right-hand side of your screen to see additional site information and to leave a comment.

We hope you will share your knowledge about these sites so that we can incorporate it in our analysis. We are interested to hear from you.

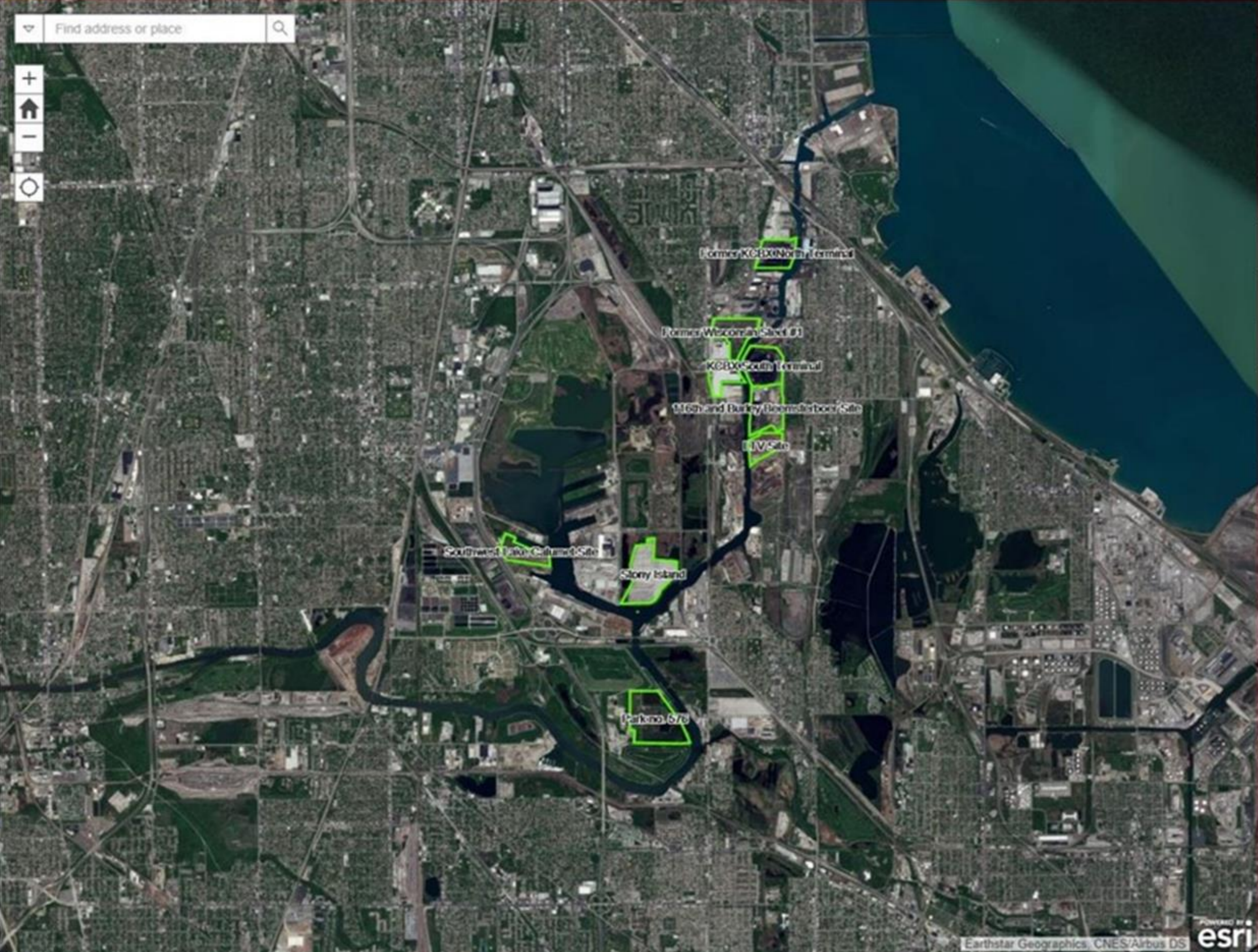
Filter list by map

- Potential DMDF Sites 2018: Stony Island
- Potential DMDF Sites 2018: Other
- Potential DMDF Sites 2018: Southwest Lake Calumet...
- Potential DMDF Sites 2018: KCBX South Terminal
- Potential DMDF Sites 2018: Park no. 576
- Potential DMDF Sites 2018: 116th and Burley Beems...
- Potential DMDF Sites 2018: Former KCBX North Ter...
- Potential DMDF Sites 2018: LTV Site
- Potential DMDF Sites 2018: Former Wisconsin Steel #1
- Potential DMDF Sites 2018: Former Wisconsin Steel #2

# Public Comments

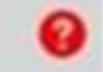


Filter list by map



- Potential DMDF Sites 2018: Stony Island
- Potential DMDF Sites 2018: Other
- Potential DMDF Sites 2018: Southwest Lake Calumet...
- Potential DMDF Sites 2018: KCBX South Terminal
- Potential DMDF Sites 2018: Park no. 576
- Potential DMDF Sites 2018: 116th and Burley Beems...
- Potential DMDF Sites 2018: Former KCBX North Ter...
- Potential DMDF Sites 2018: LTV Site
- Potential DMDF Sites 2018: Former Wisconsin Steel #1
- Potential DMDF Sites 2018: Former Wisconsin Steel #2

# Public Comments



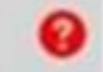
Filter list by map

Find address or place



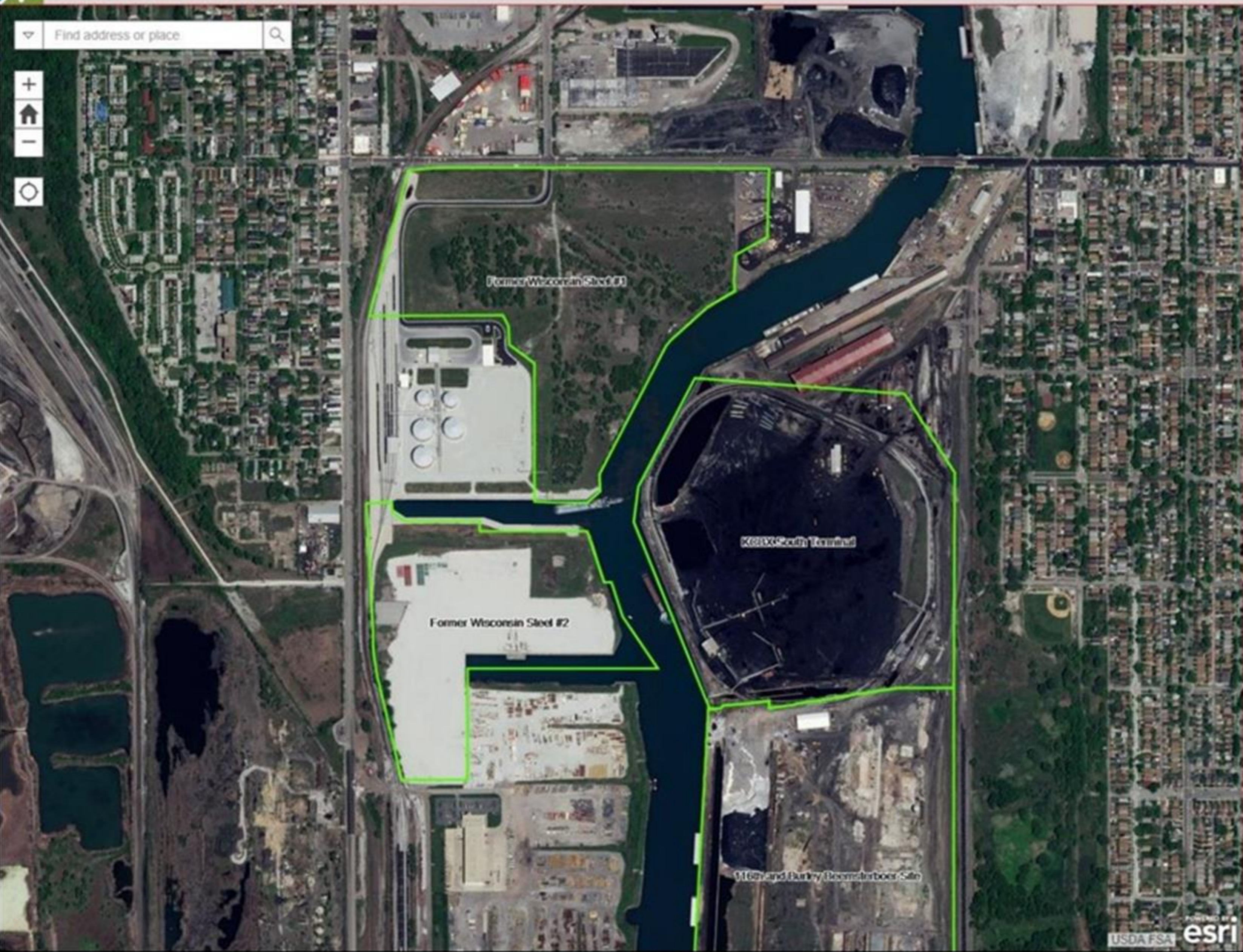
- Potential DMDF Sites 2018: KCBX South Terminal
- Potential DMDF Sites 2018: 116th and Burley Beems...
- Potential DMDF Sites 2018: Former Wisconsin Steel #1
- Potential DMDF Sites 2018: Former Wisconsin Steel #2

# Public Comments



Filter list by map

Find address or place



- Potential DMDF Sites 2018: Stony Island
- Potential DMDF Sites 2018: Other
- Potential DMDF Sites 2018: Southwest Lake Calumet...
- Potential DMDF Sites 2018: KCBX South Terminal
- Potential DMDF Sites 2018: Park no. 576
- Potential DMDF Sites 2018: 116th and Burley Beems...
- Potential DMDF Sites 2018: Former KCBX North Ter...
- Potential DMDF Sites 2018: LTV Site
- Potential DMDF Sites 2018: Former Wisconsin Steel #1
- Potential DMDF Sites 2018: Former Wisconsin Steel #2

# Public Comments



## Potential DMDF Sites 2018: 116th and Burley Bee...

**Potential DMDF Sites 2018: 116th and Burley Beemsterboer Site**

Id	5
Name	116th and Burley Beemsterboer Site
Acres	82
Site_Info	This site was once part of the LTV Steel complex. The site is currently used for bulk material handling and temporary parking for recalled VW vehicles.

### Comments

**Comments: Godina**

Name	Godina
ZIPCODE (Residents)	60617
COMMENTS	No! No! No! The 10th ward has had enough.

**Comments: H.V.**

Name	H.V.
ZIPCODE (Residents)	60617
COMMENTS	Do not put another landfill in our community! Our health is in jeopardy already look for another location.

**Comments: Kimberly Lopez**

Name	Kimberly Lopez
ZIPCODE (Residents)	60633
COMMENTS	NO, NO and NO! I think that the nine that we currently have to many! Take this to another ward!

**Comments: E Rivera**

Name	E Rivera
ZIPCODE (Residents)	60617
COMMENTS	I agree put it in Rham's neighborhood! Keep the pollutants out of our neighborhoods.

**Comments: E Cardenas**

Name	E Cardenas
ZIPCODE (Residents)	60617
COMMENTS	We do not need any more dump sites in the area! There is enough pollution in this area. As a parent and resident, I say keep the pollutants out of our ward!

# Public Comments



## Potential DMDF Sites 2018: 116th and Burley Bo...

Name  50  
ZIPCODE (Residents)   
COMMENTS  500  
PUBLICVIEW  5  
YES

### Comments

#### Comments: Godina

Name Godina  
ZIPCODE (Residents) 60617  
COMMENTS Nol Nol Nol The 10th ward has had enough.

#### Comments: H.V.

Name H.V.  
ZIPCODE (Residents) 660617  
COMMENTS Do not put another landfill in our community! Our health is in jeopardy already look for another location.

#### Comments: Kimberly Lopez

Name Kimberly Lopez  
ZIPCODE (Residents) 60633  
COMMENTS NO, NO and NO I think that the nine that we currently have to many! Take this to another ward!

#### Comments: E Rivera

Name E Rivera  
ZIPCODE (Residents) 60617  
COMMENTS I agree put it in Rham's neighborhood! Keep the pollutants out of our neighborhoods.

#### Comments: E Cardenas

Name E Cardenas  
ZIPCODE (Residents) 60617

# WEBAPP MANAGEMENT

## 1 planner/monitor, 1 technical lead

- Checked for new comments twice daily
  - First thing & before leaving the office
  - Weekends : (
  - Possibility for automation?
- Hide comments that are inappropriate:
  - Swearing
  - Threats
  - Other offensive language (race, religion, gender,...)
  - Monitor's discretion with input from PDT, OC, PAO
  - DO NOT DELETE comments
- Decided not to reply to comments in the App
  - Not for clarification
  - Not to correct false claims/misinformation

Chicago

CBS Chicago

79°

HOME NEWS SPORTS AUDIO VIDEO WEATHER E.S.P. CONTESTS MORE

### Neighborhood Fights Over Toxic River Waste Dump Planned For South Side

April 30, 2015 at 4:20 pm Filed Under: Cal-Sag Channel, Calumet River

Watch & Listen LIVE

FOLLOW US

MOST VIEWED

- 1 3 Men Convicted In Fatal Shooting Of Teen In Front Of Twin
- 2 Chicago Police, Feds Carry Out Series Of Gun And Drug Raids
- 3 Amazon: Alexa Echo Sent Recorded Conversation In "Unlikely" String Of Events
- 4 Cat Clings To Roof Of Owner's Van On Expressway
- 5 Man Walks Next Door For Haircut After Crashing SUV Into Dwell
- 6 More Than 100 Lives Have Been Saved In The Suburbs Due To Naloxone
- 7 Pizzeria Chain Offers Job To 30-Year-Old New York Man Evicted By Parents
- 8 Student Groped, Kissed On Blue Line Train On Her Way To School
- 9 Aurora Man Sentenced To 55 Years For Killing Teen Over Small Amount Of

CHICAGO (CBS) – The Army Corps of Engineers is considering dumping material dredged up from the bottom of the Calumet River and Cal-Sag Channel at five locations on the Southeast Side.

The alderman in the 10th Ward is fighting back, saying that the neighborhood shouldn't be a toxic dumping ground, CBS 2's Derrick Blakley reports.

"The people of the 10th Ward have had enough," said Ald Susan Sadlowski-Garza. "We have 8 landfills, toxic landfills, medical landfills. We deserve something better than landfills in our neighborhood."



# WEBAPP OUTPUT

Sorted by applicability



## Exportable as a table

- Technical lead closed comment period and exported results
  - Spreadsheet
  - Organized by site
- Planning lead organized and presented results
  - Determine which comments are applicable to planning process
  - Group similar comments
- TAKEAWAY: Easy!

Key	Name	ZIPCODE (Resident's)	COMMENTS	PUBLICVIEW	Site-specific(S) or General (G)	Summary
Stony Island	Valadez Family	60633	Do you ever think how this could affect your own family if this was done to the area you live in? Stop being selfish! No! The residents of the 10th Ward do not want it here and we resent the fact that our neighborhood 's TIF money was given to the US Army Corps of Engineers to research possible dump sites in OUR community! The 10th Ward homeowners, community members, business owners, parents and children say NO!!!	YES	G	"NIMBY"
Stony Island	H Young	60617	We vote no! No more landfills and dump sites in our town. We have had enough	YES	G	"NIMBY"
Stony Island	R. Zivat	60633	No to this site.	YES	G	-
Former Wisconsin Steel #1	Thomas Hoffman	60633	Just because a site is not in development currently doesn't mean it can't be at some point.	YES	S	Future development
Park no. 576	Liz Pelloso		There is wetland on this site. This site does not appear to be USACE's LEDPA. Other sites exist that would not require filling wetlands to utilize the site for dredged material management.	YES	S	Wetlands on site. Not LEDPA. From USEPA.
Park no. 576	Lisa Sowa-Downs	60633	When reviewing the site selection boards prepared by Army Corps this site says that it is still be considered by a request of the project stakeholders. Who are the project stakeholders? Who are the nonfederal sponsor?	YES	S	Want to know why we are still considering Park no. 576/which stakeholders requested it
Park no. 576	Carol Kaim	60633	Wetlands are a good place to put a dump? No to any type of dump in the 10th ward.	YES	S	Wetlands on site. Not LEDPA. From USEPA.
Park no. 576	Anna Gallardo	60633	There is a large and diverse wildlife population in this area. I have seen eagles, hawks, egrets, herons, deer, foxes and turkeys all within one week. You can NOT pollute this area with a dumping site and put these animals at risk. The new Big Marsh Park has made the area better, please don't reverse those improvements.	YES	S	Wildlife concerns. Claims presence of protected species.
Southwest Lake Calumet Site	Dennis Nyberg	60633	The Southwest Lake Calumet #8 site seems best. The dredging presumably benefits the Port Authority so it is appropriate that material be process on thier property and as far away from residential areas as possible. #3 the LTV sites seems the next best alternative.	YES	S	SW Lake Calumet Site best - benefits the port. LTV second best site
Southwest Lake Calumet Site	10th Ward Resident	60633	The Southwest Lake Calumet #8 site seems best. The dredging presumably benefits the Port Authority so it is appropriate that material be process on thier property and as far away from residential areas as possible.	YES	S	SW Lake Calumet Site best - benefits the port.
Stony Island	Lisa Sowa-Downs	60633	No Thank You. I do not approve of this site which sits between two nature preserves. Deadstick pond and Indian Ridge Marsh. I see many egrets and herons flying over. I say NO! to this site in the 10th Ward.	YES	S	Too close to habitat and wildlife
Stony Island	Vinie Ramirez	60617	Pick stoney island site.its less populated	No	S	Recommend this site. Farther from populations

# RESULTS – HOW DID IT GO?

## POSITIVE and NEGATIVE takeaways

- 332 comments received; compared to:
  - 100 comments on workshop posters
  - 15 comment cards received
  - 25 spoken comments
- Applicability of comments
  - 9 site-specific comments
  - 323 general comments
    - Not helpful for site selection
    - Outside of our authority
- Additional opportunity for involvement
  - Wider public participation (accessible, flexible, Millennial?)
  - More venting than collaborating
  - Minor hostility

## COMMON PUBLIC CONCERNS

- **Concern #1** – negative impacts to human health and the environment; environmental justice
- **Concern #2** – continue to consider sediment treatment options in lieu of disposal
- **Concern #3** – need a larger, multi-agency vision for cleaning up SE Side

NOTE: This feasibility study is in-progress.  
No final decisions have been made at this time.



## ARMY CORPS RESPONSE ACTIONS

- **Action #1** – will complete an Environmental Impact Statement instead of an Environmental Assessment
- **Action #2** – inquired about potential advancements in the treatment practices evaluated in the 2015 Draft Report
- **Action #3** – submitted letter of support to fund a Calumet master planning effort

NOTE: This feasibility study is in-progress.  
No final decisions have been made at this time.



# HARD TO GET TO

<https://usace-lrc.maps.arcgis.com/apps/CrowdsourcingPolling/index.html?appid=befceeca94674d0b85dcca348c3a15b0>

- Forced to rely on linking to the tool
  - LRC homepage
  - Project homepage
  - LRC Facebook
  - Demo booth at public workshops
  - Asked stakeholders to share with constituents\*
- \*Skewed to most outraged opinions
  - Missed opportunity to capture constructive feedback?
- Possible solution: [Go.USA.gov](http://Go.USA.gov)
  - URL shortener
  - Need to figure out if useable with ArcGIS Online



# HARD TO GIVE CLEAR INSTRUCTIONS

- **Needed a better way to let folks know what we were looking for**
  - No legend
  - Targeted vs. general comments
  - Splash window limitations
  - Link to project website for more info
    - A big ask!
  - Not a voting tool... need more than "NO!"
  - Possible solutions:
    - Start earlier in the process
    - Embed supporting fact sheets & separate instructions
    - Find ways to simplify the request for comments
    - May not be best approach for contentious projects?

## **SCREENING CRITERIA:**

### **Size:**

*Must be at least 30 acres*

### **Natural Resources:**

*Avoid high quality habitat*

### **Current Site Use:**

*Preference for under-utilized land*

### **Environmental Conditions:**

*No unresolved contamination issues*

### **Cultural Resources:**

*No historic landmarks*

### **Operational Feasibility:**

*Practical to build and fill*

### **Direct Waterway Access:**

*Safer and efficient handling of material*

### **Located on the Calumet River:**

*Waterway being maintained;*

*Minimizes transportation*

### **On Land Site:**

*Beneficial use of clean Harbor material*

# HARD TO GATHER NEW INFO

- **There was not an obvious tool for the public to recommend additional sites**
  - Comments had to be tied to existing polygons
  - Workaround involved creating a small polygon called "Other"
    - Confusing
    - Not intuitive
    - Misleading (in water placement?)
  - Possible solutions:
    - Allow users to submit polygons, pins, etc. freely in the map
    - Not apparent in template

Potential DMDF Sites 2018: Other

Id	0
Name	Other
Acres	0
Site_Info	Please use this location to submit comments... are additional potential sites along the Calu... should consider. Visit the project website fo... site screening criteria.

Comments

Comments: Sharon L. Resendez

Name	Sharon L. Resendez
ZIPCODE (Residents)	60617
COMMENTS	No no no to any new dump site children.

Comments: R. Zivat

Name	R. Zivat
ZIPCODE (Residents)	60633
COMMENTS	No to this site.

Comments: Valadez Family

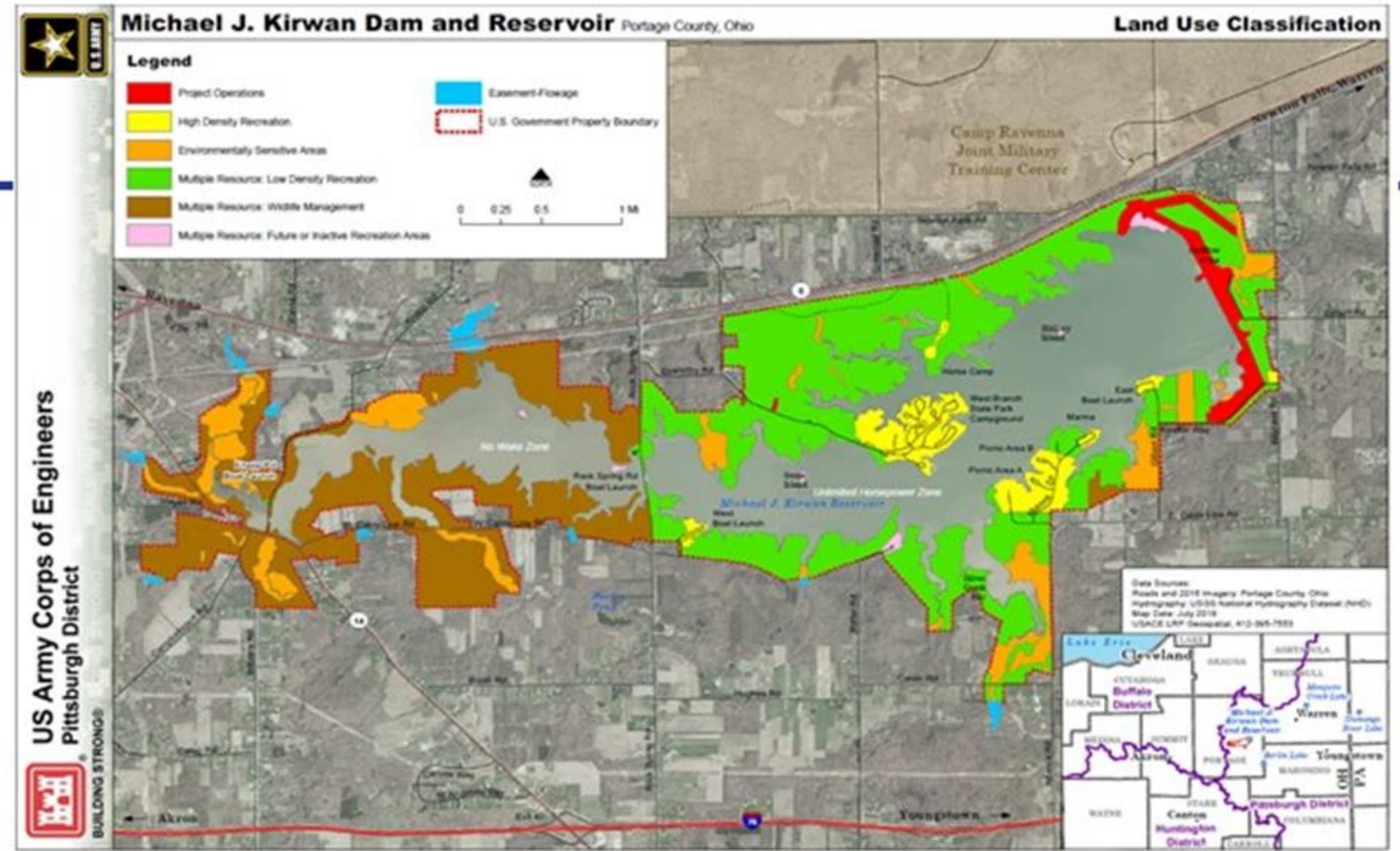
Name	Valadez Family
ZIPCODE (Residents)	60633

# REMINDER: CHAT QUESTIONS

---

- ❑ Please chat your questions, and we will discuss these after the following presentation!

# PITTSBURGH DISTRICT: CROWDSOURCING PILOT MASTER PLANS



**Presenter:** Andrea Carson, Public Involvement Specialist & Planner, Pittsburgh District



# MULTIPLE MASTER PLAN (MP) REVISIONS

## Changes in Corps regulations and community needs necessitate a revision to LRP MP

- Determines *land classifications* and *resource objectives* for the government owned and leased lands around the reservoir and use of the waters
  - Land classifications include: High Density Recreation,
- Provides *guidance* for how the reservoir should look and be managed in the future
- Updating *8 Master Plans* between FY18-20

Land Classification
Project Operations
High Density Recreation
<b>Multiple Resource Management</b> Recreation – Low Density: Activities such as hiking, primitive camping, wildlife observation, and hunting Wildlife Management General: Fish and wildlife management activities Vegetative Management: Management activities for the protection and development of a specific vegetative cover Inactive and/or Future Recreation Areas: Recreation areas planned for the future or that have been temporarily closed
Environmentally Sensitive Areas
Easement Lands

Water Surface Classification
Restricted
Designated No-Wake
Fish and Wildlife Sanctuary
Open Recreation



# WHY CROWDSOURCE MAPPING?

- **Land classifications are inherently geospatial in nature**
  - What kind of recreational & environmental activities, programs, and facilities does the public want and where?
- **Targeted audience are not always co-located with the projects**
  - Many users of these reservoirs are seasonal or weekend visitors
- **Provide multiple formats to increase participation**
  - Partner, Stakeholder & Public Meetings
  - Online Website/Comments
  - Crowdsourcing Mapping



# ENHANCING EXISTING EFFORTS

## Current Pittsburgh District Revisions

### Links to Master Plans Sites



### What is a Master Plan?

What is a Master Plan? A master plan is the strategic land use management document that guides the comprehensive management and development of Corps reservoirs now and into the future. The master plan is a land use management document and does not address other management operations, associated prime facilities (dams, spillways, etc.), or shoreline management as those operations are outlined in separate documents. After a master plan is revised, the operational management plan and shoreline management plan would both be revised to be consistent with the goals identified in the master plan.

### Why update the Master Plan?

The Pittsburgh District is currently reviewing their Master Plans to determine whether updates are necessary. This review and update process will take place over the next five years. Many of the current Master Plans were developed more than 40 years ago and some have become outdated. Changes in Corps regulations and community needs are taken into consideration when deciding whether a Master Plan revision is necessary. A Master Plan revision will classify the government lands around the lake based on environmental and socio-economic considerations, public input, and an evaluation of past, present, and forecasted trends. Updates are stewardship-driven and seek to balance recreational development and use with the goal of conservation of natural and cultural resources.

### Why does this matter to me?

The Master Plans are intended to be posted to express public interests consistent with authorized project purposes. Public needs and desires will also help to shape the management and resource objectives of the projects. Therefore, you as a member of the public, whether a local business, recreational user, local interest group member, or project partner, are encouraged to let us know your interests in the project so that we can update the Master Plan to support your needs and interests.

### What can I do with a Master Plan?

All Operations and Maintenance grants, general plans, agreements, etc. necessary to carry out land use, development and other resources proposed in project authorization documents, project design memoranda, master plans are reflected in the project NEPA documents.

A master plan provides a set of recommended actions (e.g., trail extension, development of equestrian area, boating, concessions, etc.). Recommended actions included in the master plan are further and easier to carry out. In essence, a master plan provides you approval for future actions under the assumption that they have already been analyzed and found to be appropriate for Federal land.

Accessibility Contact Us FOIA Information Quality Act Link Disclaimer No Fear Act Privacy & Security Public Inquiries The Way USA.gov

BUILDING STRONG.

### Interactive Map of Pittsburgh



### Review Relevant Documents

- For Public Review: 2016 Master Plan
- For Public Review: Draft EA and FONSI
- Current Master Plan (1975) - Part 1
- Current Master Plan (1975) - Part 2
- Current Master Plan (1975) - Part 3
- Master Plan Update Fact Sheet

### Public Input

Pittsburgh District held a Stakeholder Scoping Meeting in August 2017. Since then, we've been working to incorporate the feedback received into the updated master plan. The opportunity to see a draft of the updated master plan will be May. Stay tuned!

Click below to see the press release, presentation, and notes from the August 2017 Meeting.

Presentation: Woodcock Creek Lake Master Plan Revision - Scoping  
Notes: Stakeholder Scoping Meeting August 2017

### Progress Update

The US Army Corps of Engineers, Pittsburgh District, is revising the Woodcock Creek Lake Master Plan which guides the management of government owned and leased lands around the lake. This will impact future use of natural resources and recreational activities at Woodcock Creek Lake for the next 25 years. This is your opportunity to let the Corps know how you would like the lake to be managed in the future.

Explore the website to learn more about the Master Plan update process and proposed content as it's developed. Then, tell us what about Woodcock Creek Lake is most important to you and share what you'd like to do and see changed in the future at the lake!

- Share your perspective, sign up for our mailing list, and/or let us know how you'd prefer to be involved in the Woodcock Creek Lake Master Plan Update by emailing us at [ceurp-pa@usace.army.mil](mailto:ceurp-pa@usace.army.mil). We look forward to hearing your comments about the topics in the "Tell Us What You Think" box below!

We are currently in the process of incorporating your online comment submissions and input from the August 3rd stakeholder meeting into the Master Plan. Come back to this website periodically to see what changes we are recommending for Woodcock Creek Lake.

### Scoping Topics - Tell Us What You Think!

As we update the Woodcock Creek Lake Master Plan, we welcome any comments, suggestions, or feedback you may have. In particular, your thoughts on the following would be helpful:

- The regional needs the Master Plan should take into consideration
- The potential threats that need to be addressed in the Master Plan
- The opportunities you see for the Woodcock Creek Lake area
- Information we should be aware of as we update the Master Plan
- The areas or resources needing to be protected for their environmental, cultural, or archeological significance
- Best Management Practices that should be considered for managing the project and its resources

All responses should be emailed to: [CEURP-PA@usace.army.mil](mailto:CEURP-PA@usace.army.mil)

Thank you in advance for contributing to the Woodcock Creek Lake Master Plan update!

### Explore Considered Changes - Map



Click on the map above to be taken to our interactive map of the proposed Woodcock Creek Lake Improvements.

## M.J. Kirwan Dam & Reservoir Updated Master Plan

U.S. Army Corps of Engineers

About

### M.J. Kirwan Dam & Reservoir Updated Master Plan



### U.S. Army Corps of Engineers - Pittsburgh District

This interactive map was created to review process of the M.J. Kirwan Dam & Reservoir Updated Master Plan/Updated Land Use Recreation features.

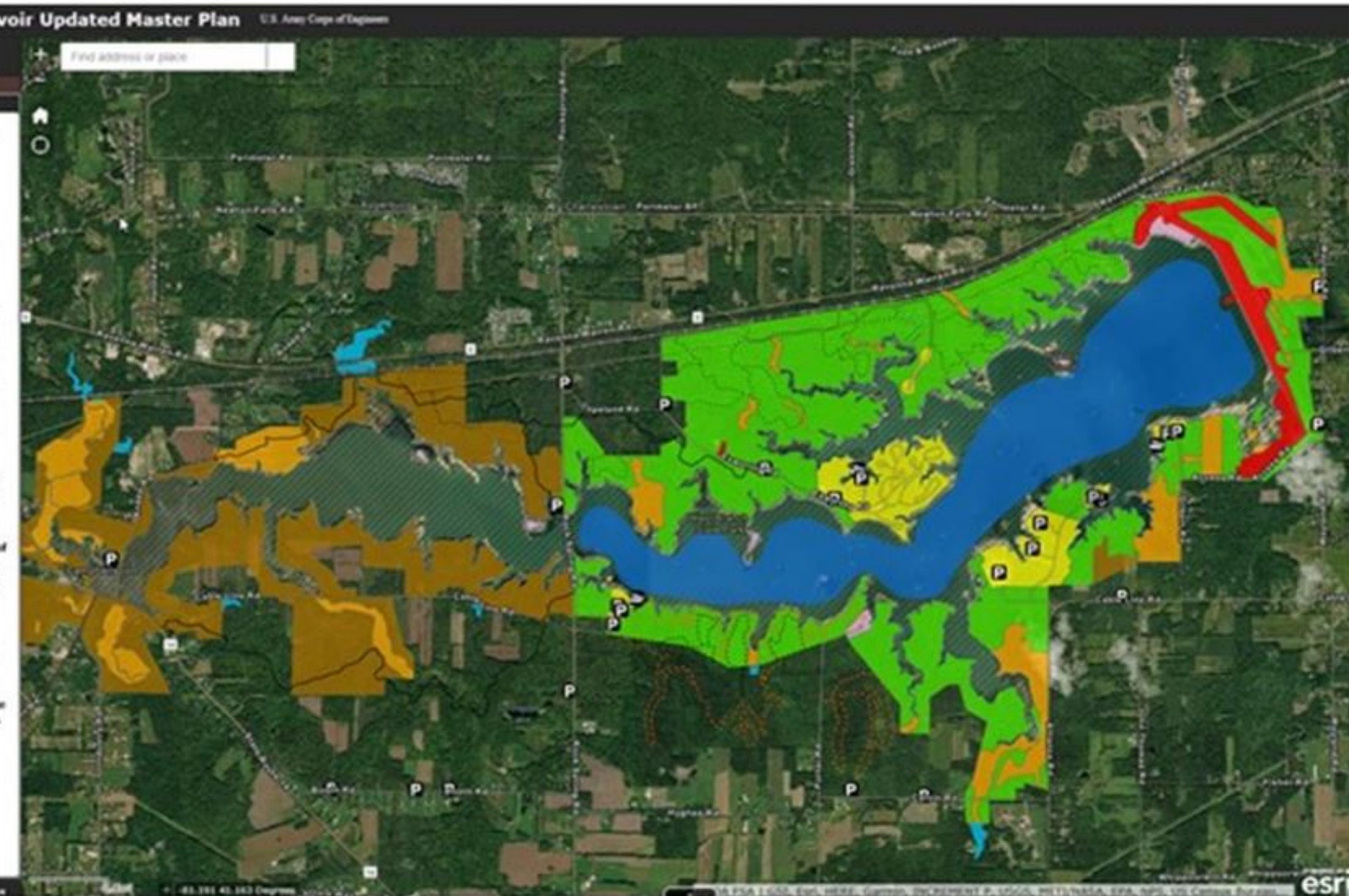
Layers of the map or map legend box containing selected features.

Map title will display tool tip is hovered over them.

Turn off layers click on the grey arrow to the left of the layer, and click off the layer. By default all layers are displayed and the arrows are turned off.

Only displays the layers only turned on.

Map style allows you to change imagery or other maps choice.



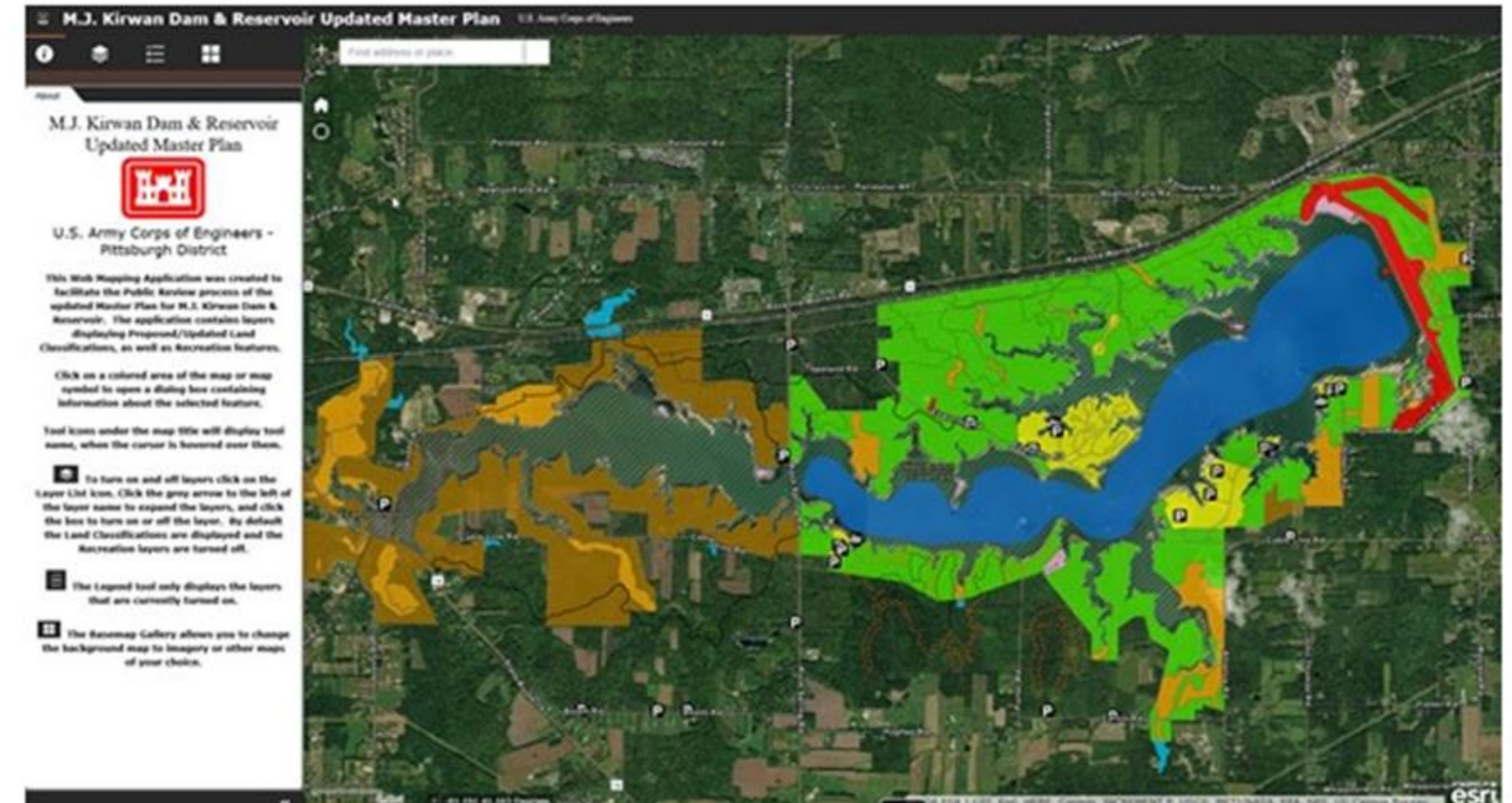
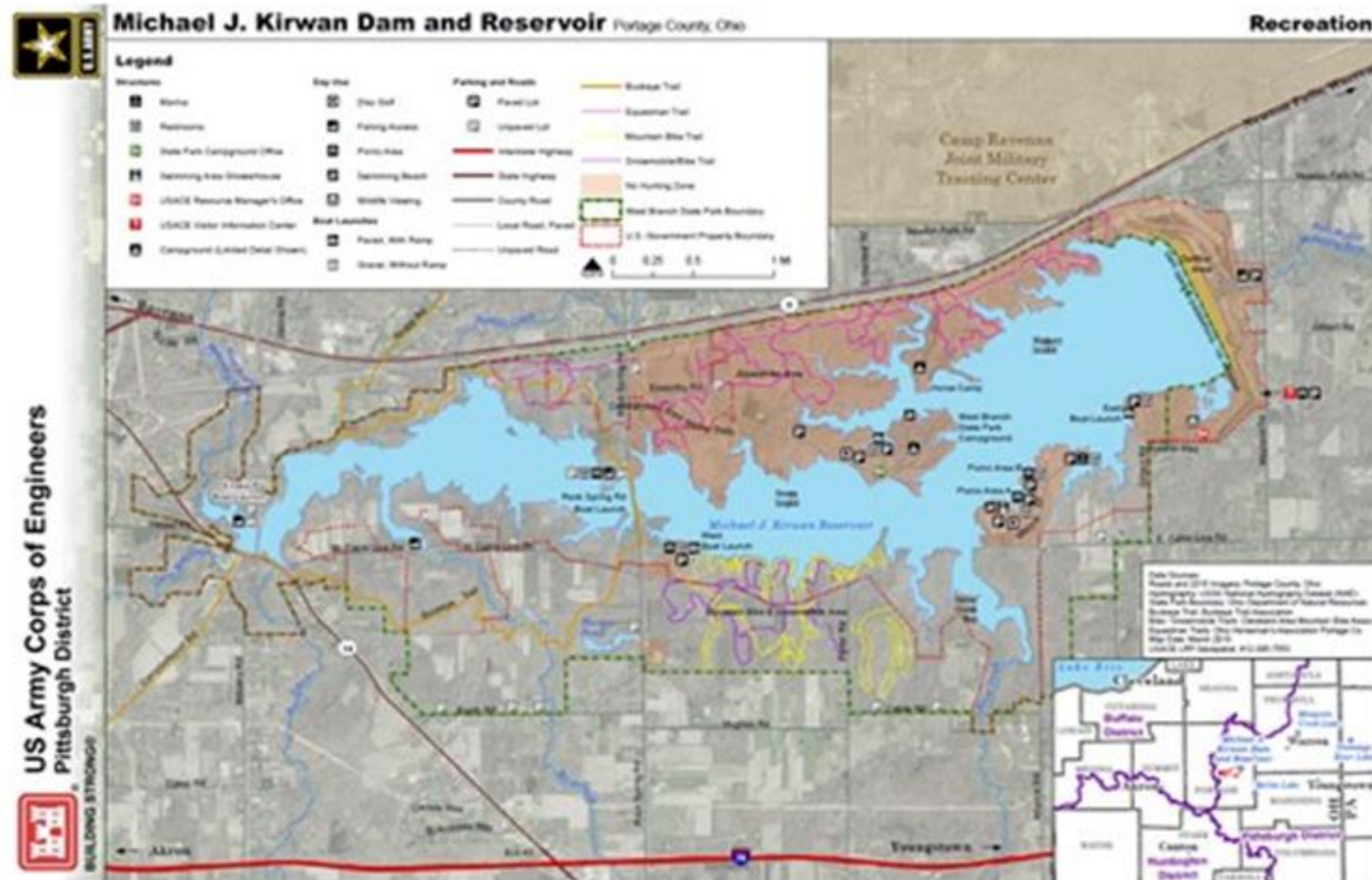
# TWO APPLICATIONS

## Scoping

- Comments on specific locations or generally within project boundary
- Opportunities and Concerns: Recreational, Environmental Stewardship, and Other

## Public Review

- Feedback on updated land classifications; Comments on existing polygons
- Any additional ideas, concerns, questions?



# TWO APPLICATIONS

## Scoping

- Comments on specific locations or generally within project boundary
- Opportunities and Concerns: Recreational, Environmental Stewardship, and Other

## Public Review

- Feedback on updated land classifications; Comments on existing parcels
- Any additional ideas, concerns, questions?



# FOREST SERVICE - CROWDSOURCE REPORTER APPLICATIONS

Talking Points Collaborative Mapping - Manager DE... | Talking Points Admin

Comment Below | 1 selected / 10 records

Comment	Choose a category	Choose a Subcategory	First Name (optional)	Last Name (optional)
What a beautiful canyon. Appreciate all you do to care for the land.	Vegetation and Landforms	Agree	Shear	
What a view! Thank you! Keep it up, Ma	Recreation and Scenery			
Great if we could fish here.	Fish and Wildlife		Ketchum	Angler
My kids love it here! Keep it as it is, please	Other Comments		Vlad & Malissa	Sytkap
Fun fun fun! Thank You Forest Service	Recreation and Scenery			
I slipped and fell here because trail need	Roads and Trails		Ernest	Walker
Where can I find out about putting a fo	Special Uses		Frye	Cookin
Could use some treatment here. If there	Fire Flood Hazard		Sevier	Burns
Why can't I grade my cattle here? It's pu	Livestock Management		T. Rajedy	O'The

Fields: | Replies: (0)

Comment from February 15, 2017

Comment: What a beautiful canyon. Appreciate all you do to care for the land.

Choose a category: Vegetation and Landforms

Choose a Subcategory: Agree

First Name (optional): Shear

Last Name (optional):

I prefer to be contact at this email address (optional):

I prefer to be contact at this phone number (optional):

I prefer to be contact at this mailing address (optional):

Comments can be automatically filtered and set up for streamlined queries

Wilderness Inventory and Evaluation Process - Santa Fe National Forest

Forest Plan Revision

Introduction | Step 1: Inventory | Step 2: Evaluation | Comment on DRAFT Evaluation | Step 3: Analysis | Step 4: Recommendation

USDA | Santa Fe NF Wilderness Evaluation

Project Information

Comment - Interactive Web Map (PILOT)

LEGEND

- Other Ownership
- Inventory Roadless Area
- Wilderness Evaluation Draft Characteristics Rating
  - No
  - Low
  - Moderate
  - High
- Wilderness Area (US Forest Service)

Comment - Online Comment Form

Comment Below

Leave a Comment

Comment (required)

Choose a category (required): wilderness

(Optional) First Name

(Optional) Last Name

(Optional) I prefer to be contacted at this email address

(Optional) I prefer to be contacted at this phone number

(Optional) I prefer to be contacted at this mailing address

Crowdsource Reporter can be embedded in illustrative maps

# DISCUSSION

---

- Please chat your questions
- Please select \*6 if you would like to verbally ask a question

# MOVING FORWARD

**Goal:** Enable partners, stakeholders, other public to provide input to our work online.

- Disaster Recovery
- Floodplain Management Plans
- Scoping
- Permit decisions
- Recreation projects
- Master Manual Updates
- Shoreline Management Plans
- Etc...

**Goal:** Learn and grow from our existing efforts.

- CoP's
- Webinars
- Analysis and reporting
- CorpsMap, Simsuite
- Gallery of Corps story map examples:
- <http://simsuite.maps.arcgis.com/apps/MinimalGallery/index.html?appid=cc971d59d8f84ee18088d078a2655640>



Natural Resources Management



Planning



Training & Exercises



USACE Disaster Impact Models

USACE Disaster Impact Models



# COLLABORATIVE TECH CONTACTS

## CPPCoP Collaborative Tech Work Group

- Amy Echols, Northwestern Division
- Hunter Merritt, Sacramento District
- Amy Snively, Kansas City District
- Angela Freyermuth, Rock Island District
- Liza Finley, Baltimore District
- Anne Baker, CPCX

## Technical POC's

- Chad Markin, Institute for Water Resources
- JD Ennis, Chicago District

## Who to contact with Questions?

- **The Collaborative Tech work group:** [Amy.M.Echols@usace.army.mil](mailto:Amy.M.Echols@usace.army.mil)
- **How to start a pilot effort:** [Anne.C.Baker@usace.army.mil](mailto:Anne.C.Baker@usace.army.mil)
- **Technical aspects:** [Chad.A.Markin@usace.army.mil](mailto:Chad.A.Markin@usace.army.mil)
- **Today's presentations:** [Alex.R.Hoxsie@usace.army.mil](mailto:Alex.R.Hoxsie@usace.army.mil) or [Andrea.L.Carson@usace.army.mil](mailto:Andrea.L.Carson@usace.army.mil)



# GENERAL INFORMATION

## MSC Liaisons

- David Bauman, South Atlantic Division
- Amy Echols, Northwestern Division
- Roselle Stern, North Atlantic Division
- Kate Bliss, Pacific Ocean Division
- Melanie Ellis, Southwestern Division
- Mike Saffran, Great Lakes & Ohio River
- Cindy Tejeda, South Pacific Division
- Crorey Lawton, Mississippi Valley Division

## Public Involvement Specialists

- SMEs at Districts across USACE

## Sites

### **CPCX**

[www.iwr.usace.army.mil/cpc](http://www.iwr.usace.army.mil/cpc)

### **Shared Vision Planning**

[www.SharedVisionPlanning.us](http://www.SharedVisionPlanning.us)

### **Collaboration & Public Participation CoP**

[https://cops/usace.army.mil/sites/\\_CPP/default.aspx](https://cops/usace.army.mil/sites/_CPP/default.aspx)

### **Link to access these slides & related info**

[https://cops.usace.army.mil/sites/\\_CPP/Shared%20Documents/Forms/AllItems.aspx?RootFolder=%2Fsites%2FCPP%2FShared%20Documents%2FrowsourceMapping%2DWebinar%2D2018&FolderCTID=0x012000D1F96D8EDBEB4D85D9C2B7E816C54D&View=%7B8DF63935%2D777E%2D42E4%2DACF7%2D88DE670E6C96%7D](https://cops.usace.army.mil/sites/_CPP/Shared%20Documents/Forms/AllItems.aspx?RootFolder=%2Fsites%2FCPP%2FShared%20Documents%2FrowsourceMapping%2DWebinar%2D2018&FolderCTID=0x012000D1F96D8EDBEB4D85D9C2B7E816C54D&View=%7B8DF63935%2D777E%2D42E4%2DACF7%2D88DE670E6C96%7D)