

## THE COLLABORATION & PUBLIC PARTICIPATION COMMUNITY OF PRACTICE PRESENTS:

# USACE's Most Innovative Cases Of Environmental Collaboration And Conflict Resolution In 2017

**The meeting will start at 1:00 PM Central Time**

To access the audio please select **"Call Me"**.

If required, use security code: **4321**

- "Listen Only" is activated, only the host can be heard
- Submit questions in the Chat Box to Everyone
- Indicate the number in your group through the Chat Box
- The presentation is being recorded and will be shared after the meeting



# BEST PRACTICES & LESSONS LEARNED: MSC INNOVATIVE CASES OF ENVIRONMENTAL COLLABORATION & CONFLICT RESOLUTION

**Anne Baker**, Collaboration & Public Participation Center of Expertise

**Kristina May**, Planning Division, Baltimore District

**Kaitlyn Carriere**, Projects and Restoration Branch, New Orleans District

**Kimberly Townsend**, Alaska District / HQUSACE Planning Development Branch

**Allison Monroe**, South Mississippi Branch, Mobile District

June 26, 2018



U.S. ARMY CORPS OF ENGINEERS  
**Collaboration &  
Public Participation  
CENTER OF EXPERTISE**

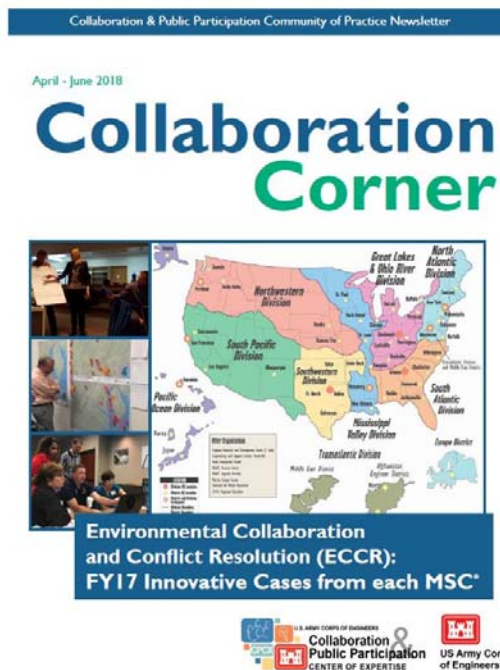


**US Army Corps  
of Engineers.**



# JUNE 2018 NEWSLETTER – 8 INNOVATIVE CASES

- *NAD*: Chesapeake Bay Comprehensive Water Resources and Restoration Plan
- *LRD*: The Pittsburgh District Environmental Advisory Board
- *MVD*: The Coastal Wetlands Planning, Protection and Restoration Act Program
- *SPD*: Los Angeles District Levee Safety Risk Communication Workshops
- *MVD, SAD, LRD*: Mississippi Standard Local Operating Procedures
- *POD*: Lowell Creek Flood Diversion Feasibility Study
- *NWD*: Willamette Action Team for Ecosystem Restoration
- *SWD*: Multi-Hazard Tournament in San Antonio



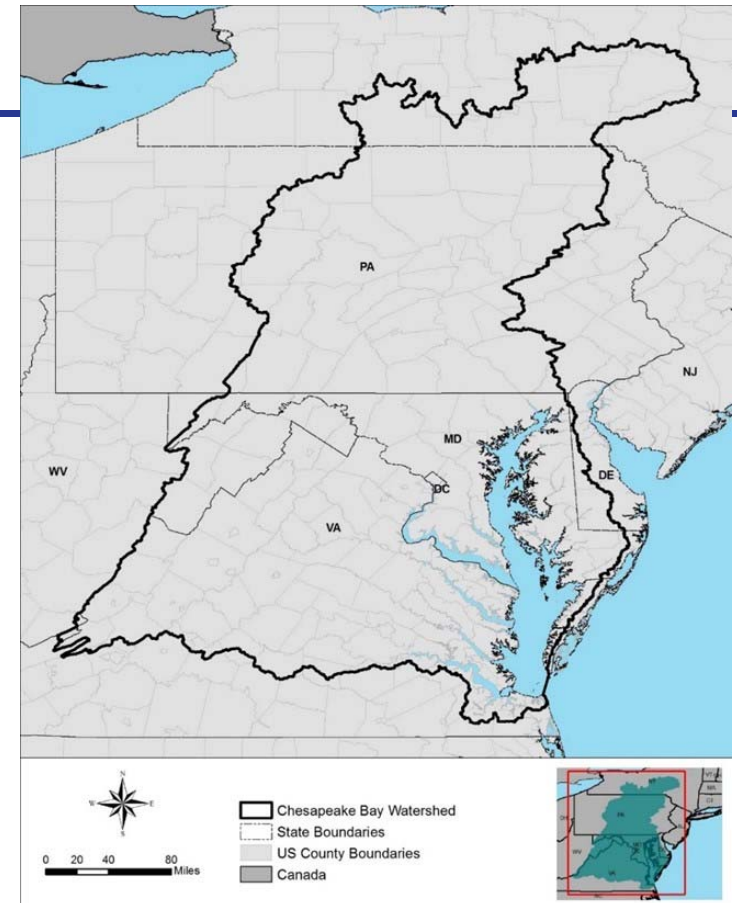
## CASES FEATURED TODAY

---

- *NAD: Chesapeake Bay Comprehensive Water Resources and Restoration Plan*  
**Kristina May**, Biologist, Planning Division, Baltimore District
- *MVD: Coastal Wetlands Planning, Protection and Restoration Act (CWPPRA) Program*  
**Kaitlyn Carriere**, CWPPRA Program Coordinator, New Orleans District
- *POD: Lowell Creek Flood Diversion Feasibility Study*  
**Kimberly Townsend**, Senior Water Resources Planner, Alaska District/HQUSACE
- *MVD, SAD, LRD: Mississippi Standard Local Operating Procedures*  
**Allison Monroe**, Team Leader, South Mississippi Branch, Mobile District

**NAD:**

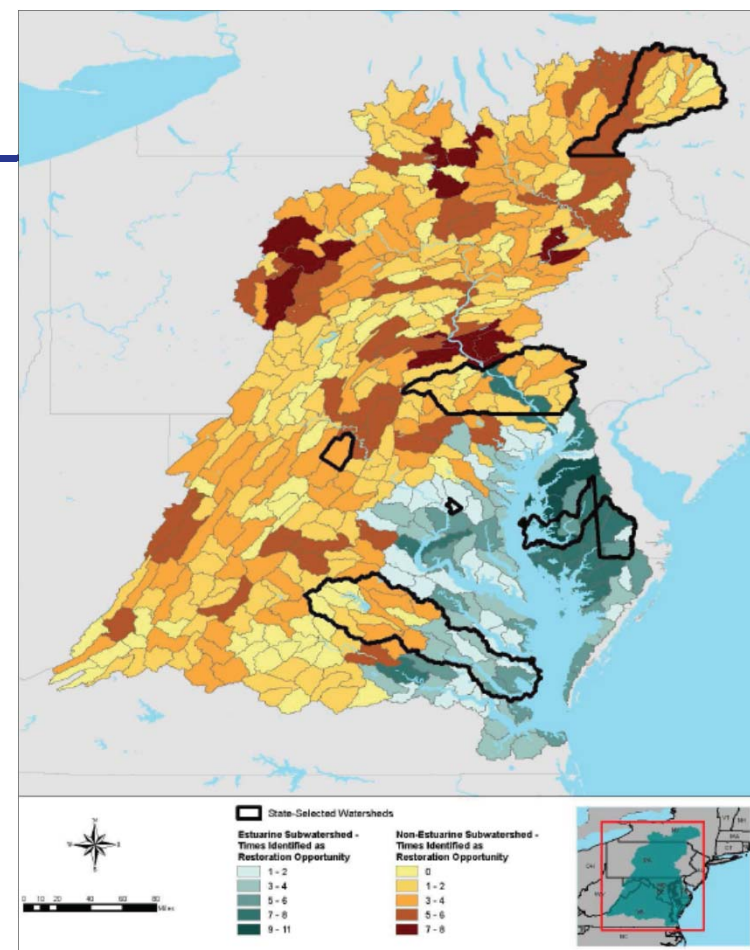
# STAKEHOLDER ENGAGEMENT FOR CHESAPEAKE BAY COMPREHENSIVE WATER RESOURCES AND RESTORATION PLAN (CBCP)



**Presenter(s):** Kristina May, Baltimore District

## BACKGROUND

- Watershed assessment
- Assists with implementation of the 2014 Chesapeake Bay Agreement
- Provides a strategic roadmap for future investments into ecosystem restoration in the watershed
- USACE Baltimore and Norfolk Districts and the National Fish and Wildlife Foundation led preparation of CBCP
- EPA, NOAA, USFWS, and Chesapeake Bay Commission assisted in development



CBCP Restoration Roadmap

# APPROACH

---

- **The Challenge:**

- How to reach as many stakeholders as possible over a vast study area that encompasses six states and the nation's capital (64,000 square miles)
- Efficient data collection management
- Stakeholder engagement documentation

- **The Approach:**

- Stakeholder workshop and webinars built into project budget and schedule
- Tracking data sources
- Document all stakeholder engagement — who was engaged, their questions and concerns, and when to follow up



# INSIGHTS

---

- **Insights:**

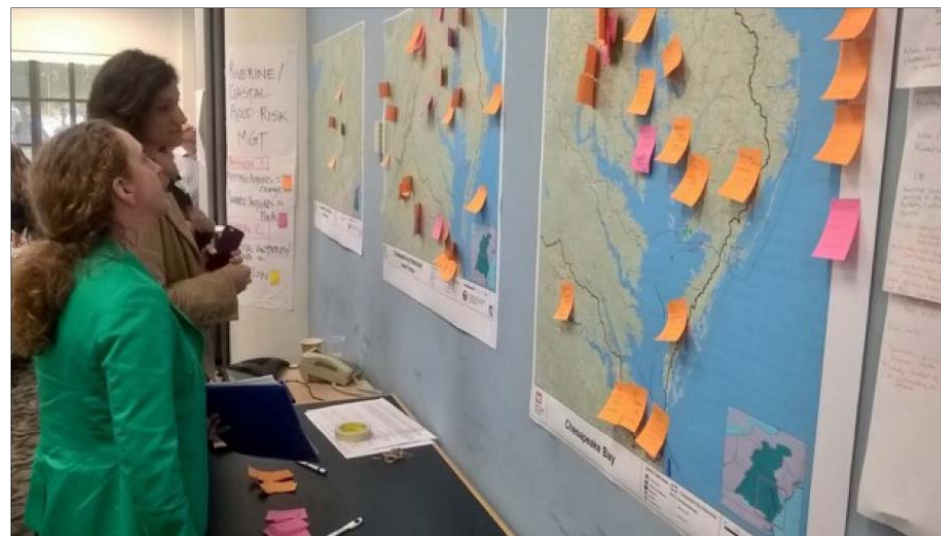
- Webinars allowed the PDT to reach as many stakeholders as possible
- Having USACE IWR CPCX coordinate and facilitate the stakeholder workshop and webinars enabled the PDT to focus on the study progress and content development
- Tracking where data originated greatly aids in efficient analysis



# OUTCOMES

Webinar	Date	Participation
Planning Analyses Overview	February 27, 2017	65
Preliminary Results of Planning Analyses	April 20, 2017	46
Presentation of the Draft CBCP	May 7, 2018	73

- ✓ Draft report released May 31
- Report included an abundance of stakeholder input and data (collected during and following webinars)
- Stakeholder webinar / “office hours” scheduled for June 28
- Lessons learned from past CBCP webinars
- Report comments due July 16



Workshop attendees Renee Thompson (Chesapeake Bay Program) and Kristy Beard (NOAA) review the existing (orange sticky notes) and future (pink sticky notes) projects planned for the Chesapeake Bay

**MVD:**

# INTERAGENCY COLLABORATION FOR THE COASTAL WETLANDS PLANNING, PROTECTION AND RESTORATION ACT (CWPPRA) PROGRAM IN COASTAL LOUISIANA



**Presenter(s):** Kaitlyn Carriere, New Orleans District

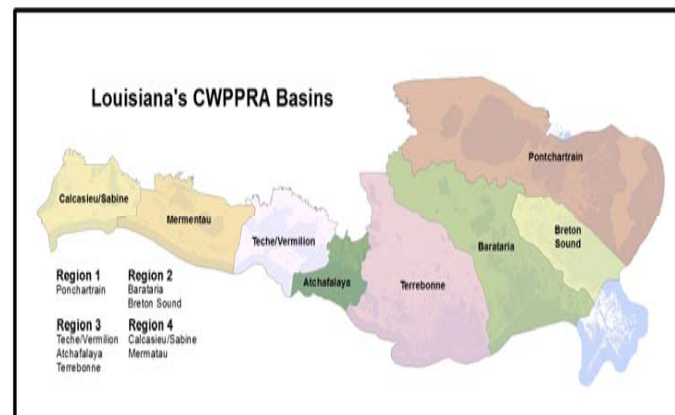
# BACKGROUND

- **Background:**
  - In 1990, Congress passed the Coastal Wetlands Planning, Protection and Restoration Act (CWPPRA) (Public Law 101-646, Title III).
  - The Act authorizes a multi-agency Task Force to select wetland restoration projects in Louisiana considered most beneficial and then design, construct, and monitor these projects.



# APPROACH

- **The Challenge:**
  - Different organizational missions and different backgrounds
- **The Approach:**
  - **Build relationships**
  - Establish Standard Operating Procedures and Process



## COASTAL WETLANDS PLANNING, PROTECTION AND RESTORATION ACT (CWPPRA)



## STANDARD OPERATING PROCEDURES

Revision 25

January 2017

# INSIGHTS

## - Insights:

- Establishing procedures to manage a multi-agency long term coastal restoration program is an iterative process
- CWPPRA has an annual review cycle through which participating agencies can review and refine collaboration procedures and processes





# OUTCOMES

- **Outcomes:**
  - CWPPRA has constructed over 110 restoration projects
  - The CWPPRA Program has become a model for interagency collaboration and decision making



**POD:**

# **PLANNING CHARRETTE FOR THE LOWELL CREEK FLOOD DIVERSION FEASIBILITY STUDY**



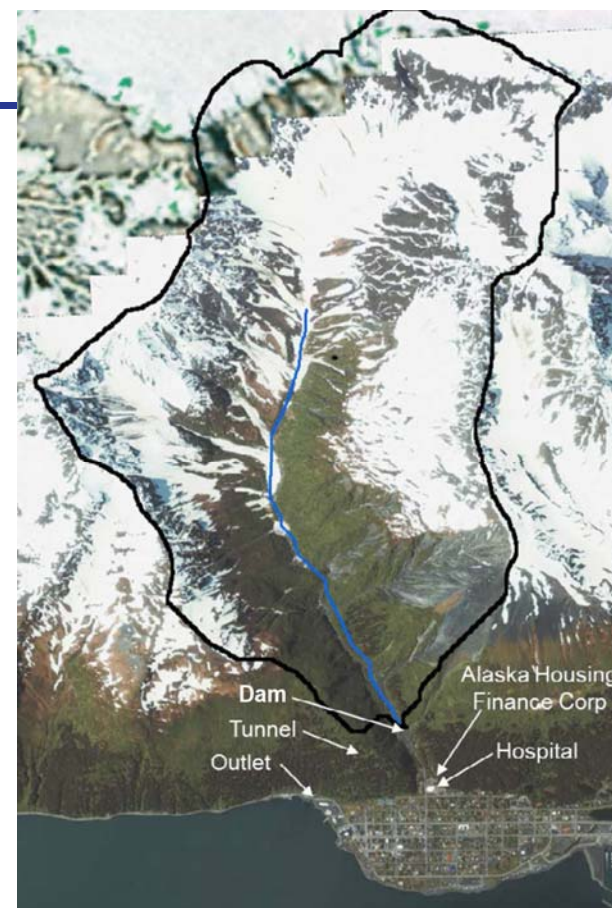
**Presenter(s):** Kimberly Townsend, HQUSACE (formerly of the Alaska District)





# BACKGROUND

- **Background:**
  - Charrette brought together USACE, the NFS, and key stakeholders to discuss ongoing flooding and sedimentation issues at Lowell Creek in Seward, AK.
  - Charrette was held two months after FCSEA execution – sought stakeholder input early!
  - Potential structural and non-structural measures were identified for further evaluation by the PDT.



# APPROACH

---

- **The Challenge:**

- How do we incorporate life safety into a Flood Risk Management study?
- How do we meld planning guidance with Corps dam safety procedures?
- What metrics do we use to select a preferred alternative?

- **The Approach:**

- Identification of a charrette facilitator with prior involvement in dam safety studies
- Selection and participation of an Agency Technical Review Lead from SPD's Dam Safety Production Center
- Risk Management Center representation
- State Dam Safety Engineer participation

# INSIGHTS

---

- **Insights:**

- Engage the Vertical Team early and often
- Work with your Review Management Organization
- Ensure the right folks are on the phone
- Communicate schedule and budget concerns, and document WHY more money or time is needed to reach certain milestones
- Risk-informed decision making is part of effective project management
- Risks have cost implications

# OUTCOMES

- **Outcomes:**
  - Agreement on study objectives and metrics for evaluating and comparing alternatives
  - Continual progress of the study
  - Vertical team buy-in on study schedule extension due to incorporation of Dam Safety risk analyses



Photo caption

**MVD, SAD, LRD:**

# **INTERAGENCY COOPERATION YIELDS LANDMARK ACHIEVEMENT & INCREASED EFFICIENCY FOR AGENCIES & REGULATORY PERMIT SEEKERS THROUGHOUT MISSISSIPPI**

**MISSISSIPPI STANDARD LOCAL OPERATING PROCEDURES  
for  
ENDANGERED SPECIES (SLOPES)  
June 2017**



**Presenter:** Allison Monroe, Mobile District





# BACKGROUND

- **Mississippi Standard Local Operating Procedures for Endangered Species (SLOPES)**
  - Assist USACE and USFWS in determining if an activity authorized by a Department of the Army permit may affect federally listed species protected under the ESA
    - Consolidates species information
    - Provides a stepwise decision framework
  - Streamline ESA Section 7(a)(2) consultation procedures
    - Increase effects determination accuracy
    - Improve responsiveness to public
    - Improve efficiency in administrative recording
    - Decrease consultation timeframes
    - Improve listed species conservation



Photo credits: USFWS

# APPROACH

---

- **The Challenge:**

- Magnitude and Timeline – The MS SLOPES tool includes 44 federally-listed threatened and endangered species; covers the entire state of Mississippi; serves 3 USACE Divisions, 4 USACE Districts, and the USFWS MS-ESO; and was accomplished in less than one year.

- **The Approach:**

- Capitalize on shared vision
- Utilize contractor – compile information, production capability, rigid timeline
- Share resources – funding, contracting capacity, technical team
- Ensure functionality and long-term viability – MOA with ‘living’ documents



# INSIGHTS

## - Insights:

- The team was committed to success, not the process.
- Our original approach involved duplicative efforts, but yielded valuable results:
  - Array of ideas, built trust among team, highlighted our common goal, calibrated our methodology.
- Adapted strategy for most efficient use of resources and team member assets.
  - Critical to delivering product on time and on budget.



Photo credits: USFWS



White Trillium orchid. Credit: USFWS

# OUTCOMES

- **Dramatic Efficiencies**
  - **USACE:** 79% reduction in the number of informal consultations with USFWS.
  - **FWS:** Total Section 7 ESA workload devoted to USACE projects reduced from 25% to 8%.
- **Continued Protection of Species**



2018 Annual MS SLOPES Review

- **Based on the great success of the MS SLOPES initiative, efforts are currently ongoing to duplicate the approach in Alabama, Arkansas, and northwest Florida.**

## DISCUSSION & QUESTIONS

---

- ☐ Please chat your questions; send to EVERYONE
- ☐ Please select \*6 on your phone to unmute your line and ask verbally

# LINKS & INFORMATION

Project Title	POC's & Links
<b>Chesapeake Bay Comprehensive Water Resources and Restoration Plan (NAD)</b>	Kristina May, NAB <a href="http://www.nab.usace.army.mil/Missions/Civil-Works/Chesapeake-Bay-Comprehensive-Plan/">http://www.nab.usace.army.mil/Missions/Civil-Works/Chesapeake-Bay-Comprehensive-Plan/</a>
<b>Pittsburgh District Environmental Advisory Board (LRD)</b>	Tom Maier & Andrea Carson, LRP Represented on the webinar by Dr. Hank Jarboe & CAPT Erik Nowak
<b>The Coastal Wetlands Planning, Protection and Restoration Act Program (MVD)</b>	Kaitlyn Carrier, Brad Inman, Sarah Bradley, MVN <a href="https://lacoast.gov/new/About/">https://lacoast.gov/new/About/</a>
<b>Los Angeles District Levee Safety Risk Communication Workshops (SPD)</b>	Joe Goldstein, SPL & Stacy Langsdale, IWR Background materials available on CPP CoP Sharepoint*
<b>Mississippi Standard Local Operating Procedures (MVD, SAD, LRD)</b>	Allison Monroe & Munther Sahawneh, SAM; Jennifer Brown, MVK <a href="http://www.mvk.usace.army.mil/About/Our-Offices/Public-Affairs-Office/Waters-Edge/">http://www.mvk.usace.army.mil/About/Our-Offices/Public-Affairs-Office/Waters-Edge/</a> <a href="http://www.sam.usace.army.mil/Media/News-Stories/Article/1248263/slopes-agreement-improves-consultation-process-for-usace-permits-in-mississippi/">http://www.sam.usace.army.mil/Media/News-Stories/Article/1248263/slopes-agreement-improves-consultation-process-for-usace-permits-in-mississippi/</a>
<b>Lowell Creek Flood Diversion Feasibility Study (POD)</b>	George Kalli, POA & Allison Monroe, HQUSACE
<b>Willamette Action Team for Ecosystem Restoration (NWD)</b>	Ian Chane, NWP <a href="http://www.nwp.usace.army.mil/Portals/24/docs/environment/biop/WATER_Guidelines_Procedures_Dec09.pdf">http://www.nwp.usace.army.mil/Portals/24/docs/environment/biop/WATER_Guidelines_Procedures_Dec09.pdf</a>
<b>Multi-Hazard Tournament in San Antonio (SWD)</b>	Marcia Hackett, SWF & Andrea Carson, LRP

\*CPP CoP Sharepoint link for accessing webinar slides & materials is listed on next page



# GENERAL INFORMATION

## MSC Liaisons

- ❑ David Bauman, South Atlantic Division
- ❑ Amy Echols, Northwestern Division
- ❑ Roselle Henn, North Atlantic Division
- ❑ Kate Bliss, Pacific Ocean Division
- ❑ Melanie Ellis, Southwestern Division
- ❑ Mike Saffran, Great Lakes & Ohio River
- ❑ Cindy Tejeda, South Pacific Division
- ❑ Crorey Lawton, Mississippi Valley Division

## Public Involvement Specialists

- ❑ SMEs at Districts across USACE

## Sites

### **CPCX**

[www.iwr.usace.army.mil/cpc](http://www.iwr.usace.army.mil/cpc)

### **Shared Vision Planning**

[www.SharedVisionPlanning.us](http://www.SharedVisionPlanning.us)

### **Collaboration & Public Participation CoP**

<https://cops.usace.army.mil/sites/CP/Default.aspx>

### **Link to access these slides & related info**

<https://cops.usace.army.mil/sites/CP/Shared%20Documents/Forms/AllItems.aspx?RootFolder=%2Fsites%2FCPP%2FShared%20Documents%2FCCR%2DWebinar%2D2018&FolderCTID=0x012000D1F96D8EDBEBCF4D85D9C2B7E816C54D&View=%7B8DF63935%2D777E%2D42E4%2DACF7%2D88DE670E6C96%7D>

